

Ellesborough Magazine

Published by Ellesborough Magazine Committee

June 2023 Issue 181



INSIDE THIS ISSUE	Page	Page
Letters	6	Coronation Pictures 28
Village Events	10	Dunsmore News 30
Articles - To Do	15	Village Reports 32
Articles - People & Places	16	Parish Council / Planning 36
Recipe	24	Local Business News 38
Childrens Coronation Recipe Competition	26	Advertisements & Contacts 44

AND MUCH MORE

NEW AND ORIGINAL!



Our new Brew Barn and vessels are suitably “Christened”
and helping us meet demand for our beers.

Thank you to our Parish for your ongoing support!

Monday to Saturday 10am to 5pm

www.chilternbrewery.co.uk



The Village Chalkboard

Community events at Ellesborough

RUSSELL ARMS

FATHERS DAY LUNCH
18th JUNE

CHARITY PUB QUIZ
1st TUES of Month

LIVE MUSIC
JULY -Thurs evenings

ART in BUCKS

BUCKS ART WEEKS
10- 25th JUNE

BUCKS MUSEUM
29th APRIL-
8th JULY

BUCKMOOREND FARM

LEAF OPEN
FARM
Sun 11th JUNE

K&EHS

MEETINGS 8pm

6th JUNE

4th JULY

5th SEPT

SUMMER SHOW

2nd JULY 2-4 pm

AUTUMN SHOW

3rd SEPT

ELLESBOROUGH GOLF CLUB

COACHING
13th May-7th JUNE
Sat 10-11am

WOMENS TASTER
1st JULY 2pm

FOREVER CYCLING CLASSES

VILLAGE HALL
Every other
THURSDAY
1.15 - 2.15pm

ELLESBOROUGH CHURCH TEAS

SUNDAYS & BANK
HOLIDAYS
through summer
2 - 5 pm

PARISH COUNCIL MEETINGS

VILLAGE HALL
17th JULY
18th SEPT
20th NOV
7.30pm

CHILTERN LADIES

STEWART HALL
7th JUNE
5th JULY
2nd AUGUST
6th SEPT
2pm

COFFEE & CAKE

VILLAGE HALL
17th MARCH
16th JUNE
21st JULY
18th AUG
10-12 noon

DUNSMORE SUMMER CELEBRATION

2nd JULY
ON THE
COMMON

DUNSMORE CREAM TEAS

Sun 18th JUNE
Sun 9th JULY
Sun 20th AUG

CHECK OUT IN YOUR MAGAZINE FOR MORE DETAILS OF:

CHURCH SERVICES, KEHS MEETINGS, CHILTERN LADIES , WENDOVER ART GROUP, EXHIBITIONS, GOLF CLUB,
VILLAGE HALL ... & WATCH OUT FOR EXCITING EVENTS AT THE RUSSELL

Acting Editor's Letter



Ellesborough Magazine

Published quarterly for distribution from the first Saturday of February, June, September & December

PLEASE SEND COPY FOR THE NEXT ISSUE TO:

Allan Westray, edellesboroughmgz@gmail.com

by 12th August 2023

ALL ENQUIRIES REGARDING ADVERTISING TO:

Annabelle, Advertising Manager
ellesboroughmagazine@hotmail.co.uk

SUBSCRIPTION / DISTRIBUTION ENQUIRIES

Janette West subsemgz@gmail.com

MAGAZINE DONATIONS

Tony Young young.ellesborough@gmail.com

BACS: Ellesborough Village Magazine

Sort Code: 40-08-41 Account No: 61151614

Dear Readers

One of the loveliest things about this time of year is waking to the sound of birdsong. The lone thrush is generally first to start but as the weeks go by more birds join in making the dawn chorus even louder. The days are longer giving extra time for us all to get so much more done, especially outdoors and in the garden.

May is such a hopeful time of year so it was a fitting month for a Coronation especially as King Charles III is known for his love of nature, gardening and the environment. The recent Coronation signifies a new beginning-the start of an exciting new carolean era.

In this special Coronation edition of our magazine may I draw your attention to the report about the wonderful Village Big Lunch on the Sunday after the Coronation and to thank everybody involved who helped to make this such an enjoyable day.

Congratulations too to all the children who entered recipes for the Coronation Recipe competition. They are all delicious! Everyone was a winner.

Finally some thank yous:-

- to all of our contributors who have helped to make this Coronation edition more special.

- to Richard Jennings for his excellent work as editor and for giving me so much support preparing this edition of the magazine .

- and to my wife Annabel without whom I could not have done much of this!

Allan Westray.

Judith Harper - secretary

Annabelle Hunting - Advertising

Richard Jennings - chairman and part time editor

Janette West - distribution

Allan Westray - part time editor

Cover - Janette West

Appeal for help with the Magazine.

I hope that you will have noticed a big improvement in the presentation of the Ellesborough magazine for the last 2 editions. This is partly because we are now using Adobe InDesign to produce the magazine giving a more professional presentation.

However producing the magazine is very time consuming and InDesign can be difficult to manage .

We **urgently** need extra help for producing the next edition due to be published in September. Both Richard and I will be away in August which is the busiest time pre publication. Unless extra help can be found it may not be possible to produce the September edition.

CAN YOU PLEASE HELP?

If you have experience of working with InDesign and would be willing to give a small amount of time to assist with the preparation of the quarterly magazine please let Richard Jennings or Allan Westray know:
edellesboroughmgz@gmail.com.

Alternatively support could be given monitoring emails coming in from contributors to the magazine, responding as necessary and ensuring that all articles and photographs are ready for publication in the magazine in good time .



WINNERS FOR THE 200 CLUB

M^{ARCH}

£50	150	John Hambly
£35	16	Alison Hewitt
£25	29	Darren Withey

A^{PRIL}

£50	40	Steve Finch (re-gifted)
£35	92	Rob Nicholson
£25	122	Helen Hick

M^{AY}

£100	19	Gill White (£50 re-gifted)
£ 50	41	Jackie Rysdale
£ 35	53	Mrs Philips
£ 25	122	Helen Hick

Thank you to everyone for your support in joining
for 2023/24

Village Litter Pick

Well done to Judith, Janette and their teams for
collecting a large pile of litter from the village .

Pictured page 37.

Ellesborough Church Vandalised

One thousand pounds for every stone thrown!

It is always sad and distressing news when an historic building is vandalised. More so when it is an iconic and much-loved building in our own village. On the 10th May around 10am a visitor in Ellesborough Parish Church was playing the piano when, from outside, five large stones were hurled through the magnificent East Window, the one immediately above the altar. The perpetrator(s) had rapidly disappeared. The police were immediately informed.

After painstaking and meticulous clearing up of minute shards of glass, temporary cover and protection was quickly arranged and we expect repairs will be made quite soon. The initial estimate of the cost of restoration is around £5000.00, one thousand pounds for every stone thrown!

Although an insurance claim has been made, there will be a financial loss. It is often thought that the upkeep and expense of the care and maintenance of church buildings are from some central fund – this is not so. All costs including those of clergy and contribution to Diocesan funds are met locally from regular church goers, friends in the community and active fund raising. At a time when so many worthy charities are making appeals for financial help in these difficult times, it is an unexpected and unwanted extra financial burden.

Tony Young Churchwarden: young.ellesborough@gmail.com

Paul Couling Treasurer: pcouling@btinternet.com

Martin Holman's Pest Control Services

I would like to thank all my clients who have used my services over the years. I am shortly going to retire and Tom is going to pursue a new career within the construction industry.

If you do have pest issues I can recommend Phil Spackman, Chiltern Pest Solutions who is based locally at Speen, he has 15 years experience and can cover domestic, commercial and agricultural pest control solutions. His contact details are: telephone No. 07947 819554 and his website www.chilternpestsolutions.co.uk

I am looking forward to spending more time fishing, gardening, walking/training our spaniels and may see you around. But in the meantime, I just wanted to thank you for your custom and advise you of another local pestie, in case you have a need.

Parish Council Vacancy

A casual vacancy has occurred within Ellesborough Parish Council for a Parish Councillor.

Applicants must have been resident in Ellesborough parish for at least the last 12 months, on the electoral register, and be a Commonwealth citizen (including British subject) and at least 18 years old.

Duties include representing parishioners and attending up to 7 Parish Council meetings per annum with a view to improving or help changing the Parish.

Applicants should in the first instance contact the Parish Clerk Mr John McKeown on clerk@ellesborough-pc.gov.uk

Bugler

If anyone is a bugler or knows of one available for the Remembrance Service later this year, please do let the Parish Council know. We would like to carry on the tradition of a live bugler.

clerk@ellesborough-pc.gov.uk

Ellesborough Parish Updates

Each week/fortnight a Parish update is emailed out to currently over 180 parishioners giving details of local events, news, HS2, and traffic updates on planned roadworks etc.

If any parishioners wish to join the mailing list, please in the first instance email the new Parish clerk Mr John McKeown on clerk@ellesborough-pc.gov.uk requesting membership and you will be added to the current mailing list.

Why miss out on local news – join us!

John McKeown

David Carroll Your Local Councillor

Dear Residents

I would like to update you on various issues

Bucks Council have appointed new Highway contractors which is good news because we have all been very frustrated with various problems but hopefully things will improve in the future in catching up on Highway works issues.

Many residents have contacted me about speeding through our area and I will pass those concerns on to the Police.

Can I thank the many residents who contact me on various issues and every one who supports our community.

Regards David.

Forever Cycling - New Activity in Ellesborough Village Hall

"ForeverCyclingisabrandnewcommunityinitiative which provides older adults an opportunity to be active and socialise. During the activity, you use our set of stationary floor pedals to pedal at your own pace, helping strengthen and improve the flexibility in your legs and hips. Whilst doing this, you watch a virtual tour of one of our world locations.

This could be riding through New York City on an open top bus, cycling past the Eiffel Tower, or going through the streets of Tokyo, or one of the other 2000+ locations we have available. The sessions are a great chance to reminisce and tell stories with others about your travels, or see places you have never been.

The classes are starting on Thursday 27th of April at the Ellesborough Parish Hall, from 1:15-2:15pm. They will be taking place fortnightly and there is a cost of £4 per session (cup of tea/coffee is included), which can be paid in cash on the day. We do have restrictions on numbers, so please give us a call if you wish to attend on 07399748803."

Joe Barnard

(See charities section p47 tbc for more details)

Forever Cycling - Report

I've always wanted to go to Japan. Well, I've been there now - I cycled all around Tokyo last Thursday afternoon! I was Virtual Cycling with Activity in the Community.

It's at Ellesborough Parish Hall on alternate Thursday afternoons, 1.15pm - 2.15pm.

8 ELLESBOROUGH MAGAZINE

It was lovely fun and great company. Cycle at your own pace, sitting in a comfortable chair listening to some nice music and 'travelling' the roads of some beautiful countryside on film. Your machine tells you how many miles you've 'cycled' how many revolutions you've made and even counts the calories you've used, so you know exactly how much chocolate you can eat when you get home!

Plus, the lovely Joe makes a great cuppa! Join us for some gentle exercise? It's only £4.

E H.

Ellesborough Golf Club News

There are several events coming up at the Golf club which might interest our villagers.

The Club invites parishoners to the golf club on 20th August afternoon for tea and cake.

If boys and girls would like to join as a cadet there is a full programme of practice sessions and coaching throughout the summer for the very reasonable sum of £25! Please contact the office for further details of how to join.

New adult members are welcome also. Did you know that adults can learn to play in our golf academy?

Fuller details our outlined on page 45 (tbc)

Contact the Golf Club office for further details:

Office@ellesborough.co.uk

Bucks Art Weeks At St Dunstan's

Nine artists and makers, including a new exhibitor for 2023, all handpicked for the variety and quality of their work, showing in medieval St Dunstan's Church, Monks Risborough.

Paintings, print-making and illuminations, paper sculpture, turned vessels and ceramics, mosaics and jewellery.

For photos and more info, see www.artatstdunstans.blogspot.com

Home-baked cakes plus tea, coffee and fruit juice on offer throughout the show. On Saturday and Sunday afternoons, the church serves cream teas.

Art at St Dunstan's is open Saturday 10 - Sunday 18 June

Saturdays and w/ days 10 - 5, Sundays 12 - 5.

St Dunstan's Church, Burton Lane, off Mill Lane, Monks Risborough, BUCKS HP27 9JE.

Please park on Mill Lane.

Chris Inder

Wonderful art at Discover Bucks Museum

Don't miss our magnificent show of art by local artists and craftspeople in the Museum's first Open Art Exhibition, which showcases the great creative talent in the county and includes paintings, prints, ceramics, photography, sculpture and glass. 140 artists have taken part and with almost 200 pieces of work on display there's plenty to enjoy and most pieces are for sale.

Many artists on show are taking part in Bucks Art Weeks so a visit to the exhibition is a great opportunity to get a taste of a variety of artists' work before visiting them in their studios. The exhibition is on now and runs until Saturday 8 July in the Museum's beautiful art gallery.

For times, charges and to book visit discoverbucksmuseum.org

Discover Bucks Museum, Church Street,
Aylesbury HP20 2QP 01296 331441

LETTERS:

Letter from Janet Wells (Rector)

Christian Hope

A few years ago, I was called into Great Kimble School to give a series of classes on the topic of Christian Hope. I thought, 'Aha, they are stuck and do not know what to say and this is why they are contacting the vicar in the hopes that I will know what to say.' It is indeed a difficult topic.

Christian Hope is not just a wishy-washy thing like hoping the sun will shine when one has no idea what the forecast is. It is based on a knowledge of what God has done in the past and the belief that the nature of God evidenced in the Bible is true. The main points being that God has revealed himself as a God of Love and that he has purposes for the Good for us.

When St. Paul writes of Christian values, he links Christian hope with endurance. The two to him are linked. This is a difficult lesson to digest. How do we keep hope alive when things are hard? The Christian finds that hope is a gift of the Spirit, it wells up in the same way as the Spirit and always reminds us of the name of Jesus and his love for us and endurance is gifted as well. I have just read a passage from the first letter of Peter in the New Testament (this week's Sunday reading) in which the author urges us to be always ready to give an account of 'the hope that is within us.' The author, like St. Paul, takes it for granted that his readers do have Hope.

In this very difficult time in international and national affairs when there are so many people in the world suffering, we need Hope for without it we may lose the capacity to work for a better future which pray God will come. May God give us the gift of hope and may the changes that need to come, come speedily.

I send my best wishes to you all.

Reverend Janet Wales

Kimble & Ellesborough Horticultural Society



Our monthly meetings are held at Stewart Hall. Members will be notified in advance of any Covid precautions.

If you are not a member but would be interested in coming to any meetings please contact Brian Butler (Chairman) at butler@care4free.net or call him on 01844 342220 before attending. Please see our website for any updates. _

JUNE

Give your Garden the Designer Touch
Tuesday 6

Maria Greenhill is a qualified garden designer with a passion for green and organic gardening. She has lots of design advice to give your garden a consistent style and show how water features, pergolas and various focal points will contribute to your garden.

JULY

SUMMER SHOW at Stewart Hall: 2 00 – 4 30 pm
Sunday 2

Our displays include sweet peas, roses and vegetables and tempting home-made cakes are available.

SEPTEMBER

AUTUMN SHOW at Stewart Hall: 2 00 – 4 30 pm
Sunday 3

Come and see some beautiful displays including chrysanthemums, dahlias and vegetables and enjoy delicious home-made cakes.

Bulbs for the Year and How They Get to your Garden
Tuesday 5

John Amand is a bulb specialist and Chelsea gold medal winner from Jacques Amand International Ltd. He will talk to us about bulbs, some common and others more specialist, and give us an insight into how the bulb industry produces, farms, harvests, packs and distributes bulbs for us to enjoy in the garden.

10 ELLESBOROUGH MAGAZINE

Meetings are held at 8.00 pm every 1st Tuesday of the month (except January and August) at Stewart Hall, Little Kimble. Although we pride ourselves on our expert speakers, all talks are very informal and are followed by refreshments and a raffle.

Visitors are always welcome. If you decide you would like to join please make yourself known to any Committee member or contact Charlie Taylor, Membership Secretary, at kehs.bucks@outlook.com.

Meetings are held at 8.00 pm every 1st Tuesday of the month (except January and August) at Stewart Hall, Little Kimble.

Visitors are always welcome.

Wendover Art Club

Wendover Art Club meets on the 2nd and 4th Thursday of each month between September & May at St Anne's Hall, Wendover Christian Centre, Aylesbury Road, Wendover HP22 6JG. Meetings are from 7:30 to 9:30 pm.

September 14th Club AGM

September 28th

Demonstration by Cathy Read in mixed media depicting a townscape. Please note there is a charge of £10 for non members on demonstration evenings.

Peter Edwards

Buckmoorend Farm on LEAF Open Farm Sunday, 11th June



Visit Buckmoorend Farm on LEAF Open Farm Sunday, 11th June 2023 Farming's annual open day

On Sunday 11th June, farms across Britain will be opening their gates to the public offering the chance to discover first-hand where their food comes from, how it is produced and allowing the rare opportunity to get up close and personal to farming; whilst learning more about the fabulous job it does. So, make a date to visit Buckmoorend Farm.

LEAF Open Farm Sunday offers a unique chance to see what happens beyond the farm gate showing your support for British farming. This is your opportunity to speak with Daniel Hares and the team at Buckmoorend Farm and learn more about the farming industry, how your food is produced and what is being done to care for the countryside. Have all your questions answered and come away with a plethora of new information and understanding of our countryside!!

Come and join us at Buckmoorend Farm for LEAF Open Farm Sunday and learn more about how the bread and cereal you enjoy for breakfast every morning is grown, learn why worms are so important for the soil on our farm, and why we need bees and other pollinators. On the day you can also get up close to the machinery we use, find out how we look after and care for our cows, pig and sheep, as well as the wonderful wildlife that lives on our farm. Daniel and Steph Hares said: For us Open

Farm Sunday is really important. It's as much about free family fun, as it is about educating people about sustainable farming, teaching them where food comes from, and the importance of supporting local. We have a range of activities planned for young and old and hope that everyone will come away having learned something new about our farming world"

Annabel Shackleton, LEAF Open Farm Sunday Manager said: "LEAF Open Farm Sunday is a wonderful opportunity for visitors – both young and old – to get closer to farming and the people that make it happen. Each event is unique, each farm is different and every farmer too, but what they all share is a passion for farming, amazing expertise and a commitment to caring for the countryside."

To find out more about Buckmoorend Farm and LEAF Open Farm Sunday visit www.buckmoorendfarm.co.uk and www.farmsunday.org. LEAF Open Farm Sunday is managed by LEAF (Linking Environment And Farming), the leading organisation delivering more sustainable food and farming.





The
RUSSELL ARMS
BUTLERS CROSS BUCKINGHAMSHIRE • SINCE 1763

In anticipation of the sunshine arriving, we cannot wait for you to try our **New Summer Menu**, launching in the latter half of June, which introduces many interesting new options. These include a delicious Flat Iron Steak, the return of the ever-popular Scampi & Fries, a flavoursome Malaysian Curry and our new Summer Salads to name but a few of the delicious new dishes to choose from! A reminder that we also offer a **Takeaway** service as an alternative to dining in the restaurant. Simply call us to order your food for collection!

You may remember our **Being Mindful** pledge. We believe that Being Mindful is integral to our approach when it comes to selecting produce and suppliers and in how we operate as a business. An important step on our journey to greater sustainability is our curation of a wider range of delicious **vegan** and **vegetarian** dishes so you'll find plenty of these on our menu too.

It's **Father's Day on June 18th** – a wonderful opportunity to get together as a family and join us for a fabulous Sunday lunch! Reserve your table as soon as possible as we anticipate being fully booked!

Don't forget that we are still hosting our **monthly charity pub quiz** in aid of local charity **PACE**. Held on the first Tuesday of every month, it's a great way to spend time with your nearest & dearest. Get your team together & show your support for a great local charity.

Throughout July, you can join us for some live music on Thursday evenings with the return of our **Buskin' @ The Russell** annual event. Local artists from all genres of music will be playing for your entertainment. Details will be posted on our social media pages and in the pub.

At the end of last year, our Facebook account was hacked and after trying for several months to get it reinstated, we have given up and resigned ourselves to creating a new page. We'd really appreciate it if you would Like & Follow our new page so that we can let you know about exciting events, new menus & other news.

Here's to a great summer!
From all the staff at The Russell Arms

www.therussellarms.co.uk
hello@therussellarms.co.uk
01296 624411

2 Chalkshire Road, Butlers Cross, Aylesbury. HP17 0TS



www.facebook.com/moogiespubs

ART IN BUCKS :

Discover stunning art created by professional and amateur artists from Buckinghamshire.

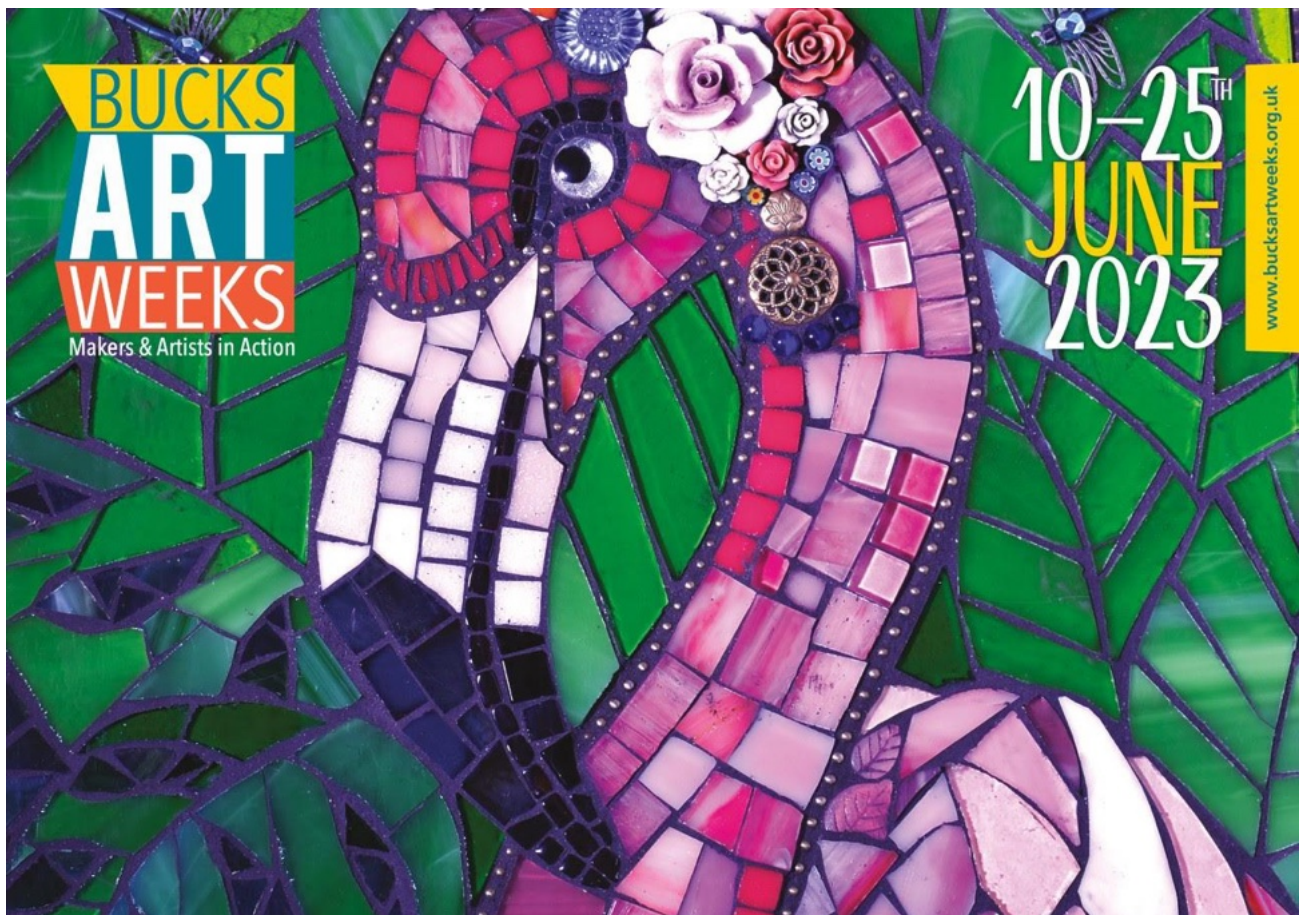
Open Art Exhibition at Discover Bucks Museum, Aylesbury 29 April – 8 July
and Bucks Art Weeks 10th – 25th June



Open Art Exhibition

Discover Bucks
Museum

29 April - 8 July 2023



Ellesborough Church Services



Church Services at St. Peter & St. Paul Ellesborough

(Services in brackets and italics indicate services the people of Ellesborough are invited to at the other Benefice Churches)

4 June 10:45 Songs of Praise

11 June 10:45 Parish Communion

18 June 10:45 BCP Matins

(18 June Ellesborough Children are invited to attend St. Nick's Kids -see note below*)

25 June 6 p.m. PATRONAL EVENSONG "CELEBRATING 800 YEARS". All Welcome.

It is 800 years since the first record of a priest at Ellesborough, Do join us to celebrate this bit of village history!

2 July 10:45 Songs of Praise

9 July 10:45 Parish Communion

16 July 10:45 BCP Matins

(16 July Ellesborough children are invited to St. Nick's Kids 'On Tour' – see note below*)

23 July 10:45 Parish Communion

30 July No Service at St. Peter & St. Paul. (Benefice Communion Common Worship is at 9:30 a.m. at All Saints Little Kimble)

6 August 10:45 Songs of Praise

13 August 10:45 Parish Communion

20 August 10:45 BCP Matins

27 August 10:45 Parish Communion

For information about all Church Services and events please see www.achurchnearyou.com

***Note about St. Nick's kids which is open to all families in Ellesborough & The Kimbles**

***18 June- Ellesborough families are invited to St. Nick's Kids at St. Nicholas Church, Great Kimble. We will be continuing God's BIG story with Moses.**

Doors open at 9:15 a.m. for tea, coffee, and pastries for adults plus lots of fun and games and activities for children followed by an engaging service for everyone. We aim to finish at 10:30.

***16th July – Ellesborough families are invited to St. Nick's Kids 'On Tour' visiting Buckmoorend Farm, Ellesborough.**

Please bring your chairs and picnic blankets for a very special outdoor service. You are all welcome to stay on afterwards and purchase food from the farm shop or enjoy your own picnic. Parking on site from 9:15 a.m., please look out for a marshal to direct you to an appropriate space. We aim to finish the service, as usual, at 10:30.

NOTE ABOUT St. Nick's kids. This service starts with play stations for children and croissants and coffee for adults. This is followed by a period of worship for all age groups and then there are activities in specific age groups so that all have a thoroughly good time. Several Ellesborough families have already joined and a member of the St. Peter & Paul congregation is on the planning Committee. It is on the Third Sunday of the month. Doors open 9:15 and it ends at 10:30.

Simple Ideas for fun locally with children or grandchildren

Bekonscot Model Village,

40 Warwick Road, Beaconsfield.

A wonderfully detailed model village, the oldest in the world, set in the 1930's plus a small light railway, a café and a childrens' play area. It is open 7 days a week from 1000 – 1730. Tickets cost £14 for adults and £9 for children aged 2 – 15. There are other concessions and family tickets. www.bekonscot.co.uk Parking is in the church car park in Warwick Road.

Tiggywinkles Animal Hospital,

Aston Road, Haddenham, HP18 8AF.

Visit the animal hospital and see the animals that are recovering, being treated and those who cannot leave because of the extent of their injuries. Talks, craft activities and guided tours. Open 7 days a week 10am – 4pm. £6.90 for adults, £4.90 for children aged 3-18. £4.90 for concessions. www.sttiggywinkles.org.uk

Hogshaw Farm and Wildlife Park,

Claydon Road, Hogshaw, MK18 3LA. *Hogshaw Farm has a host of farm animals plus some exotic birds and small mammals. There is a soft play area, a café, a farm kitchen and an excellent outdoor play area. They are open Wednesday to Sunday in term time and 7 days a week during school and bank holidays 10am until 5.30pm. Tickets cost £10.95 for adults and children aged 2-15 years. Concessions £9.95. www.hogshawfarm.co.uk*

Stonor Park,

Henley-on Thames, RG9 6HF. Tumblestone Hollow is a great adventure playground in the grounds of Stonor Park. It is advisable to book in advance and it is cheaper: £12.50 for adults, £12.50 for children over 105 cm in height (as they can access all the treetop walkways), £8.00 for those 92cm – 105cm, under 92cm are free of charge. For more details – www.stonor.com

MP Cricket Academy Sports Ground,

New Barn, Kingsey Road, Thame OX9 3JL.

01844 212226. *Courses are held throughout the year as the Academy has both outdoor and indoor facilities. The Academy holds holiday courses for 5, 4, 3, 2 days, or just 1 day. www.mpsportsacademy.co.uk*

Halton Tennis Centre, Chestnut End,

Halton Village, HP22 5PD.

The centre hosts holiday coaching courses and has both indoor and outdoor courts. To find out more, contact the Club Head Coach Roy Knight on 07857 929886. www.haltontennis.co.uk.

Chiltern Open Air Museum,

Newland Park, Gorelands Lane, Chalfont St. Giles, HP8 4AB. 01494 871117.

There are fascinating rebuilt houses brought to the museum from all over the area dating from the Iron Age onwards, along with farm

animals, a woodland walk and a beautiful wooden adventure playground. Events of historical theme are held throughout the year and there are many arts and crafts and special experiences to be enjoyed. Prices are £9.54 for adults, £8.64 for concessions and £7.50 for children aged 4-16. Under 4's there is no admission charge. On special weekends (jousting, gladiator games, for example the admission charge is approximately £3 more). To book: www.coam.digitickets.co.uk

Whipsnade Zoo, Dunstable LU6 2LF

Whipsnade is a superb day out, but it is expensive. Tickets are: £30 per adult at the weekend and £28 midweek, concessions slightly less. Children at the weekend £21, midweek £19.90. Under 3's go free. The site is huge and there is free parking outside. However, I would strongly advise that you take your car into the zoo for an extra £25 on arrival. With the car you can drive slowly from continent to continent, park and enjoy each sector. It also means that you have your picnic with you. There is a lot of walking even with the car. However, the animals are wonderful and there is an excellent playground at the end.

Annabelle Hunting Annabel Westray

YOUNGmINDS

fighting for young people's mental health

London 2023..... done .

Edinburgh 2023..... done !

Firstly an enormous thank you to everyone for your amazing support... your kind words, your belief in me when I doubted if I could do it, and your very generous support for my coffee morning and fundraising; it has all been both overwhelming and humbling. To date you've helped me raise over £5,500 (£2300 this year and £3300 in 2020). YoungMinds are so grateful for your support.

So to the running!!!!...After a not quite textbook training build up in the last few weeks before the race, and a severe case of 'maranoia' the week before, the long awaited London marathon weekend was upon me....After years of false starts it suddenly became very much 'game on' for April 23 2023....

We stayed the night before in London... (an evening meal of water and plain pasta for me!!)..... and then the next morning, full of trepidation and anticipation, I started the 45-minute journey to the start in Blackheath. Although I've done a few events before, the sheer scale of this one was quite overwhelming....but everyone was in good spirits and there was a real sense of camaraderie.

Knowing I'd need some motivation en route, written on my hand in permanent Sharpie pen were all the mile points where I knew YoungMinds supporters and the Alexander clan were going to be (huge thanks to the whole family for coming up to support me... meant a lot to see their smiling faces!!).....But unfortunately the heavens opened as I arrived at Blackheath and it soon became apparent that the Sharpie wasn't permanent when deluged with London rain!!!!

But no matter, the support from those I knew and those I didn't was amazing! I was so proud to be wearing my bright yellow YoungMinds top..... the crowd were fantastic despite the rain



and it is astonishing how a stranger randomly shouting your name (which was writ large on my running vest!) and a few motivational words can really lift and energise you when the going gets tough..... and it did get tough!!

It wasn't my 'best day out' as they say, but some reasonable training behind me, the amazing crowd, the iconic landmarks, special family cheers and remembering why I was running for Young Minds, all provided enough 'oomph' to get me round in a few seconds over 4hrs 15 mins, which I was very happy with.

All in all it was an amazing experience for a great cause.... but funnily enough I didn't enter the 2024 ballot!!

My plan as I write is to run Edinburgh on May 28th, and if I manage to drag my creaky body round, I will have completed what I originally set out to do in 2020.....and I think that will well and truly get the marathon bug out of my system!

The money donated will make a real difference to the lives of many young people and their families dealing with challenging mental health issues. A huge and heartfelt 'Thank you' again for all your support.

For more information on YoungMinds work please visit <https://www.youngminds.org.uk>

Edinburgh Marathon 28 May.....

Well it's done! Beautiful course and a warm sunny day but from a running point of view it wasn't pretty or pleasant but I got round!!! a bit slower than London and even more of a slog!!!



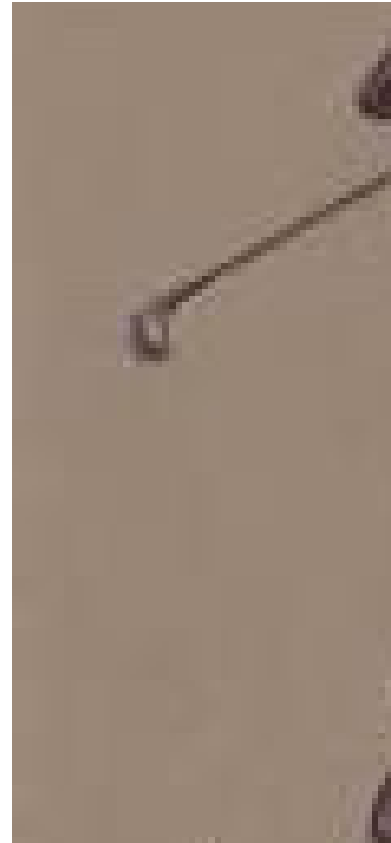
By the end of the 1950s, with Harold Macmillan only occasionally using Chequers (as he had his own country house in West Sussex), the club had 'never had it so good' and embarked on a series of major developments. Negotiations commenced with the Chequers Trust to purchase rather than lease the original 9 holes with this eventually achieved in 1960 at a cost of £5,000 with a stipulation that the land must always be used for the purposes of a golf club. The prospect of a new clubhouse on the Aylesbury side of the course was also under discussion and this led to a first planning application in 1961 which was refused on the grounds that the new entrance to the course from the Upper Icknield Way was not acceptable. The club appealed and approval in principle was granted in 1962. Yet another Special General Meeting was held that year to consider the Club's architect's proposed design and this was rejected by an overwhelming majority with a "less costly building" being requested (resulting in the rather disappointing 1960's style building which is still in use today). Yet another Special General Meeting in 1964 finally approved the architect's much-reduced proposals with the building finally opening in April 1965 with the old clubhouse sold later that year and the current arrangements for play from the first tee across the road from the clubhouse then put in place.

1962 saw another charity exhibition match, this time featuring Peter Allis and three of his fellow Ryder Cup team members, Dai Rees, Bernard Hunt and Dave Thomas, while the harsh winter of 1963 closed the course for 77 consecutive days. Membership was now increasing rapidly with 36 new members in 1964 alone, bringing the total membership to 455 and bringing further concerns about the course being too busy, so with demand for membership so strong, subs were again raised by 25% in 1966 at another Special General Meeting. Harold Wilson had been elected as Prime Minister in 1964 and was a keen and regular golfer at Ellesborough often playing a two-ball with his bodyguard and he also became a full member on stepping down in 1970.

By 1976 the club was struggling to hold back the great wave of social change arising from the Swinging 60's and a new dress code was confirmed and policed with lounge suits or blazers with collar and tie (or cravat) being required in the mixed lounge, jackets allowed to be removed in the men's bar and the main bar area of the clubhouse demarcated by a series of imaginary lines dividing Ladies, Men and Mixed social areas. The various General Meetings were now taking place in the new clubhouse but major social events such as the annual dinner dance continued to take place at the Spread Eagle in Thame.

In 1979, Margaret Thatcher was elected as Britain's first woman Prime Minister (at a time when Ellesborough Golf Club had still not given its own Lady members voting rights). As she didn't play golf it was decided to extend her honorary membership to her husband Dennis, who played regularly, and her son Mark. By the early 80's, the Club was finally in a secure financial position with full membership and a long waiting list, employed a team of groundstaff, a secretary/manager, a steward and a chef and the greatest controversies of the decade were the new English Golf handicap system and the introduction of the larger American golf ball of 1.68 inch diameter compared to the British 1.62 inch diameter ball, which soon became compulsory for all club competitions.

By the start of the 1990's the ladies still had no voting rights on club matters and this was brought to a head in 1991 when local Magistrates refused to extend the bar licence until the matter was satisfactorily resolved. Another Exceptional General Meeting was held in 1993 which failed to achieve a two thirds majority in favour of the Ladies



Golf Club - Part 3

rights and so the club was left with no option but to beg a three-year extension to the license while the matter was resolved, which was granted. This was followed by a further extension in 1996, after which, finally in 1998, 92 years after the founding of the club and 70 years after women were given

the vote in national and local elections, Ladies were given full voting rights at Ellesborough Golf Club (and were henceforward required to pay the same subscriptions as the men).

Amidst this controversy, land had become available adjacent to the 'new 9' which offered the prospect of extending and lengthening the course. This was purchased in 1995 at a cost of £80,000 and course architects appointed to redesign and extend the course.

The club dress code was further relaxed to allow "tailored shorts" on the course but only with long socks for the men and a complex series of rules regarding the wearing of jackets in the clubhouse depending on the day of the week and time of day was enforced. John Major had succeeded Margaret Thatcher and again didn't play golf and nor his successor Tony Blair, although he did introduce the President of the United States Bill Clinton to play a few early morning holes in 1998 and a further 9 in 2001.

In the final year of the old century, the new holes were at last brought in to play and immediately greeted with a motion at that year's AGM that they should be abandoned and the old holes reinstated (which was defeated but was raised again at the next year's AGM which did result in a number of modifications). By the

start of the new century, playing patterns had changed dramatically with much of the pressure on weekends relieved by a substantial proportion of the membership being retired and playing midweek, many as Midweek members (who were granted voting rights in 2001). 2005 brought extensive centenary celebrations including a re-enactment of the first teeing off by the then Earl of Buckinghamshire.

Over its hundred years the Club has produced many outstanding golfers – Reg Pattinson, who played in The Open as an amateur in a group with Henry Cotton – Marian Purdy, Sheila Tunstall, Monica Green and Fiona Thompson all of whom won the Bucks Ladies County Championship, Clara Leathers who was Bucks Junior Scratch Champion (and was the first junior to be Ellesborough Ladies Champion), Tom Lawson the Bucks, Berks and Oxfordshire Amateur Champion, the team of Ladies who won the Mail on Sunday National Golf Classic and many more.

And so, the club has continued with a long run of non-golfing (non-church-going) Prime Ministers, most of whom (like Bonar Law) hardly seem to have a chance to visit the clubhouse before they are replaced by their successor. The Club has a full membership of 650 and a waiting list, mobile phones are banned on the course and in the clubhouse, a relaxing cigarette after a game is no longer an option, most players use electric trolleys and GPS distance-finders, people change their shoes in the car park, jeans are now acceptable in the the bar]

r

The Club has survived two world wars, numerous financial crises, harsh winters, droughts and two global pandemics and still continues to provide both a valued social hub and a source of continuing heartache, frustration and occasional delight for many of the men, women and children of Ellesborough Parish.

The end.

Thanks to John Stewart for all three articles.

NATURE NOTES

The Magic of Springtime Birds

As the days get Longer and longer and the weather warms up (hopefully!), our bird population springs into action. Love is in the air for most wildlife in spring, and birds are no exception. Most bird species find mates and reproduce starting in spring. After returning from migration or coming out from overwintering sites, they start looking for mates immediately. You may see flocks of birds meeting together in your trees or bushes. Songbirds sing to attract one another and court mates in preparation for building nests and raising their young.

At dawn, or even before, the air is filled with the sound of nature's finest singers. It's the springtime dawn chorus – nature's alarm clock and it's a natural symphony that's not to be missed. Most of us will get to hear it whether we like it or not – instead of turning over and trying to get back to sleep, why not just open the window and enjoy.

In Britain the dawn chorus is particularly impressive, thanks to our country's rich diversity of bird species. From the melodious blackbird to the trilling wren, there's a wide range of voices to be heard in the early morning hours.

We are especially fortunate here in Ellesborough as the best place to experience the dawn chorus is in the countryside where the sound is unimpeded by the noise of the city. If you're not an early riser, don't worry – you can still enjoy the dawn chorus from the comfort of your own home. Simply open your windows and listen to the birdsong as you go about your morning routine. It's a great way to start your day on a positive note.

One of our most iconic migrant birds of spring is the cuckoo, whose distinctive call is a familiar sound across the countryside. These birds are known for laying their eggs in the nests of other birds and leaving the hosts to raise their young. Despite this somewhat

sneaky behaviour, the arrival of the cuckoo is a much-loved symbol of spring and a welcome sign of the season's arrival.

A very early migrant to listen out for in the spring is the chiffchaff, a small, olive-green warbler the size of a blue tit, whose distinctive, high pitched "chiff chaff" call is a sure sign that warmer weather is on the way. Later arrivals are the house



martins, swallows and screeching swifts whose long migrations from Africa are a testament to the incredible abilities of these tiny birds.

A **n**other familiar farmland bird that makes its presence known in spring is the skylark.

These small birds are known for their



beautiful song, which can be heard from high up in the sky as they hover and sing.

Most birds get down to the business of mating, nest building and egg laying as soon as possible in the spring to take advantage of the warm months while raising their young. For many birds, spring can be a race against time to pair up, lay eggs and raise chicks while food is plentiful.

For the blue tit in particular, it's crucial to time things just right.

This tiny bird has only one shot to raise a family each spring, and for a bird that may only live for three years, each of those shots need to count. Unlike blackbirds, robins and many other garden birds, blue tits are usually only able to raise just a single brood of chicks, carefully timing the hatching of their eggs with the bud burst of trees, particularly the oak, and the explosion of caterpillar food that comes with it. Each chick can eat 100 caterpillars a day, so to feed a brood of ten, adults need to find as many as 1,000 caterpillars a day!

Blue tits generally start nesting in mid to late March when you will see them busily filling your nest boxes with moss and feathers. A female blue tit can complete the building of her nest in just two days. This year however, given our cold and wet spring, nesting has been delayed because of the lack of early buds on the trees.

These pictures from a camera in a birdbox in our garden were taken in mid May when the seven eggs had only just been laid – a good 3 to 4 weeks later than we have seen in the past



Now that we have emerged from the darkness of winter and embrace the warmth and light of spring and early summer, our birds provide a symphony of song and a spectacle of colour. Whether you're an experienced birdwatcher or simply enjoy the beauty of nature, there's no better time to get out and explore the wonderful world of springtime birds. So, set your alarm clock early and head out into the countryside – you won't be disappointed.

Doug West.

A touch of Plain Bob

It's an odd hobby for a 15 year old lad. One normally associated with learned professors, or head masters or one of the legal profession. Even though rugby, cricket or swimming were amongst the top pastimes church bellringing is the one which took my fancy.

I am often asked what persuaded me to become a church bellringer. If you recall your bible Saul was on his way to Damascus when he saw a flash of blinding light and the voice of God spoke to him. It was very much like that although my blinding light was a 15 year old brunette.

In those days boy didn't meet girl very often and it was through Sunday school that such meetings were authorised even though strictly monitored. Boys in one room and girls in the other and it was only at the Christmas party that hair was let down. It was during one party game that matters took a very enjoyable turn. It was where there were a number of chairs stretched through the hall with one chair less than those present. The idea is that when the music stops you grabbed a chair and sat on before anyone else. As the game progressed eventually there was just myself and Miss Brunette left. You were not allowed to hold onto the chair so when the music eventually stopped I was over the back with the speed of light. But Miss Brunette was almost as fast so she ended sitting on my knee. With a girl sitting on your lap that was tantamount to becoming engaged. But it was very much a case of love me, love my bellringing as she was very much part of the local parish bellringers.

Now for the technical stuff. The bellrope is made up of two major parts. The tail end is as one would expect the end of the rope and above this is a coloured woollen piece which is called the salley. The idea is that the bell when swinging is controlled by the rope and there are two distinct phases to ringing. One is called back stroke and the other is hand stroke. The skill comes in combining these two actions into one smooth process.

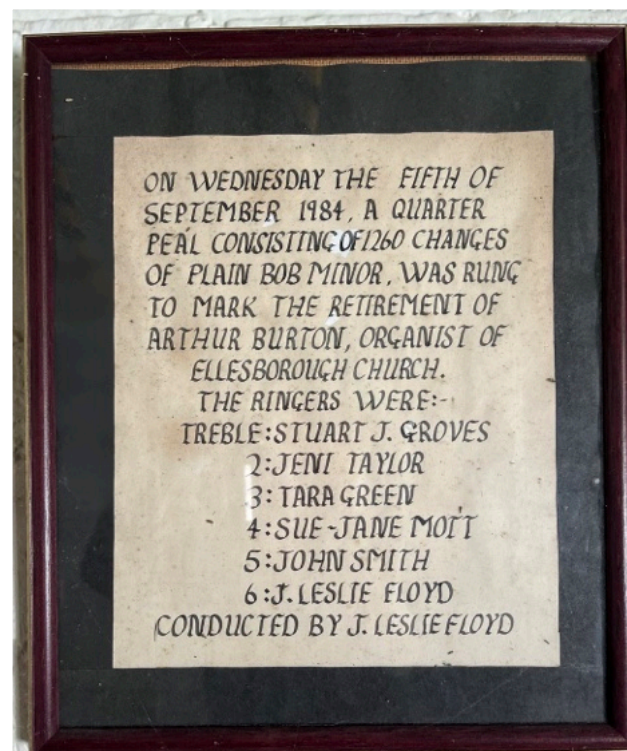
Teaching of ringing took place on Saturday mornings with the bells being silenced to prevent complaints from the locals. Strict procedures were in place as ringing can be dangerous with ropes flying about. My teacher was Walter, best described as a Toby Jug on legs. However his skill as a ringer was never

in doubt as he had years of ringing both man and boy he told me on many occasions. It was great that instruction was on Saturday morning as my week was normally school, home tasks homework and finally Sunday school. The job I hated most was on Saturday morning cutting up the Daily Mail into 12 inch size sheets, punching a hole and finally stringing them up in the downstairs loo. At least I was well educated having The Daily Mail behind me.

With a young lady on my arm the biggest problem was one of cash. Pocket money was virtually nonexistence or rather insufficient to entertain a young lady bellringer. The solution was to get a job.

And so I did.....

Les Floyd.



Ellesborough Church Tower Plaque commemorating the quarter peal of "Plain Bob" 1984 conducted by Leslie Floyd

Lady Bridget Croke of Chequers

Over a two-year period, just before the Covid lockdown of 2020, a very detailed and researched description of all the contents of Ellesborough Church was made by a team of volunteers from the Arts Society (previously known as The National Association of the Decorative and Fine Arts Society).

The results are an easily accessible and valuable resource, in print and digital, of information about items small and large that also shine a light on the history of the ancient Parish Church of St Peter and St Paul, its people and connections from past to present.

The most prominent memorial is to Bridget Croke who died in 1638.

Lady Bridget Croke was the second daughter of Sir William Hawtrey and Winifred Dormer, she was the wife of Sir Henry Croke MP of IM

Hampton Poyle, Oxfordshire, and the mother of Sir Robert Croke MP. She inherited the Chequers estate upon the death of her elder sister, Mary Wolley.

Bridget's grandfather was the Sir William Hawtrey who extensively rebuilt Chequers in 1565 and who famously was required to have close custody of the unfortunate Lady Mary Grey who had offended Queen Elizabeth 1 by

marrying without permission. The impoverished Mary spent a miserable two years mainly confined to what is now called the Prison Room at Chequers, presumably no longer used as such!

The translation of the fulsome Latin inscription on the monument by Mark Walker – a Latin expert and provided by the Arts Society, tells us something of the character of a feisty woman:

Behold a name as emphatically marble-like a monument and equally long-lasting indeed a harder stone and as this monument itself. A name you may seek (reader) either

in the inscription but rather in the virtue of she who lived piously, breathing ethics. Bridget Croke. A wife more than a friend, how nearly not a woman, having nothing of femininity besides her sex, a wife abounding in manly constancy, by many births. and much love as a mother, descended from famous ancestors, and worthy of their fame, whose husband bedews her flourishing remains with his tears; while she lies buried by this monument, he lies buried by his grief.

There is a splendid portrait of Lady Bridget reproduced in Norma Major's book: Chequers The Prime Minister's Country its History.



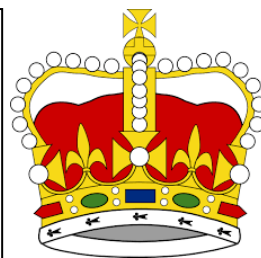
Lady Croke memorial head piece

Chequers was the family seat of the Hawtrey family for 300 years and Bridget's grandfather William was the last of the Hawtrey family to live there. Many are buried in the church and a small flat stone is set in the floor with this inscription: Under this stone is the resting place of the ancient Hawtreys of Chequers.

Tony Young



CORONATION QUICHE
Chosen by their Majesties for the Coronation.
The quiche is great for picnics and suitable for
vegetarians. A deep pastry base with the delicate
filling of spinach, broad beans & tarragon.
Serve with new potatoes & salad.



Buckingham Palace/Mark Flanagan/Lucy Wilson

Ingredients

- 250g plain flour, plus a little for dusting
- 50g cold butter, diced
- 50g lard (or use Margarine or Butter for vegetarian)
- 4 tbsp milk, plus a splash
- Or 250g block of ready-made shortcrust pastry

For the filling

- 125ml milk
- 75ml double cream
- 2 medium eggs
- 1 tbsp chopped fresh tarragon
- 100g cheddar, grated
- 180g cooked spinach, liquid squeezed out and lightly chopped
- 60g cooked broad beans or soya beans

Method

1. Sieve the flour into a bowl with ½ tsp salt. Add the butter and lard and rub the mixture together using your fingertips until you get a sandy, breadcrumb-like texture. Add the milk, a little at a time, and using a cutlery knife, start to bring the dough together, using your hands, making sure it has no dry patches and feels smooth. Cover and allow to rest in the fridge for 30-45 mins.
2. Put a 20cm loose-bottomed tart tin or a 20cm pastry ring on a baking sheet. Lightly flour the work surface and roll out the pastry to a circle a little larger than the top of the tin and approximately 5mm thick. Carefully lift the pastry into the tin and gently press into the corners, taking care not to have any holes or the mixture could leak. Cover and rest for a further 30 mins in the fridge. Heat oven to 190C/170C fan/gas 5.
3. Line the pastry case with greaseproof paper – to do this cut a disc of greaseproof paper larger than the tin, scrunch it into a ball (this makes it more pliable), then unwrap and place it in the pastry case. It should come above the sides. Fill with baking beans or uncooked rice and bake blind for 20-25 until nicely golden and dry. Carefully remove the greaseproof paper and baking beans and return to the oven for 5 mins to dry the base. Reduce the oven temperature to 160C/140C fan/gas 3.
4. Beat the milk, cream, eggs and herbs with some seasoning. Scatter half of the grated cheese in the blind-baked base, top with the chopped spinach and beans, then pour over the liquid mixture. If required, gently give the mixture a delicate stir to ensure the filling is evenly dispersed but be careful not to damage the pastry case. Sprinkle over the remaining cheese. Place into the oven and bake for 20-30 mins until set and very lightly golden.

If you have a favourite recipe, why not share it through the magazine.
Contact Judith Harper: jd25.harper@gmail.com



LEAF OPEN FARM SUNDAY

VISIT A FARM AND DISCOVER THE WORLD OF FARMING

11th June 2023

Buckmoorend Farm

Butlers Cross | HP17 0UT

11am to 3pm

COME ALONG TO ENJOY A FUN FAMILY DAY AND
LEARN ABOUT EVERYTHING THAT GOES ON
BEHIND THE SCENES AT BUCKMOOREND FARM!

DISCOVER the world of animals, crops and machinery

TASTE our delicious produce in our farm shop and kitchen

ENJOY some great produce from our local suppliers

TAKE part in fun activities for young and old

MEET our amazing animals

Buckmoorend
farm shop & kitchen

www.buckmoorendfarm.co.uk



www.farmsunday.org

@Openfarmsunday

LEAFopenfarmsunday

openfarmsunday



LEAF Open Farm Sunday is managed by LEAF (Linking Environment And Farming). Charity no.1045781

Childrens Coronation

Congratulations to Edith (6 years old) with her Edith's Heritage Coronation Cake, Phoebe (10 years old) with her Queen Camilla's Coronation Carriages and Rosie (13 years old) with her King's Coronation Prawns. Their winning recipes appear at the end of this article.

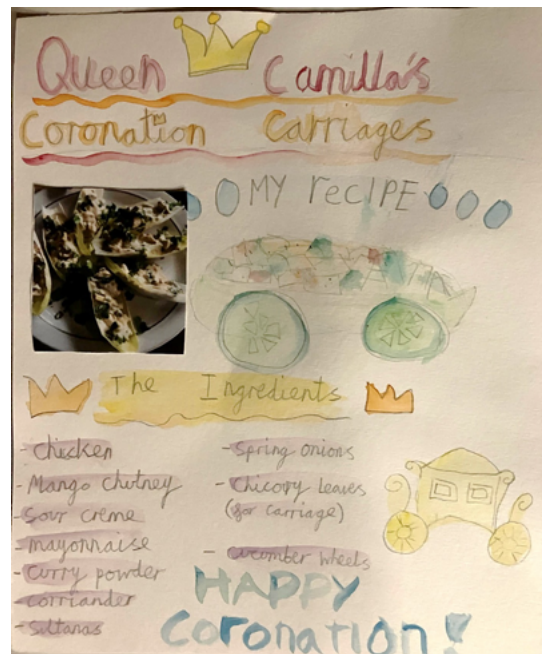
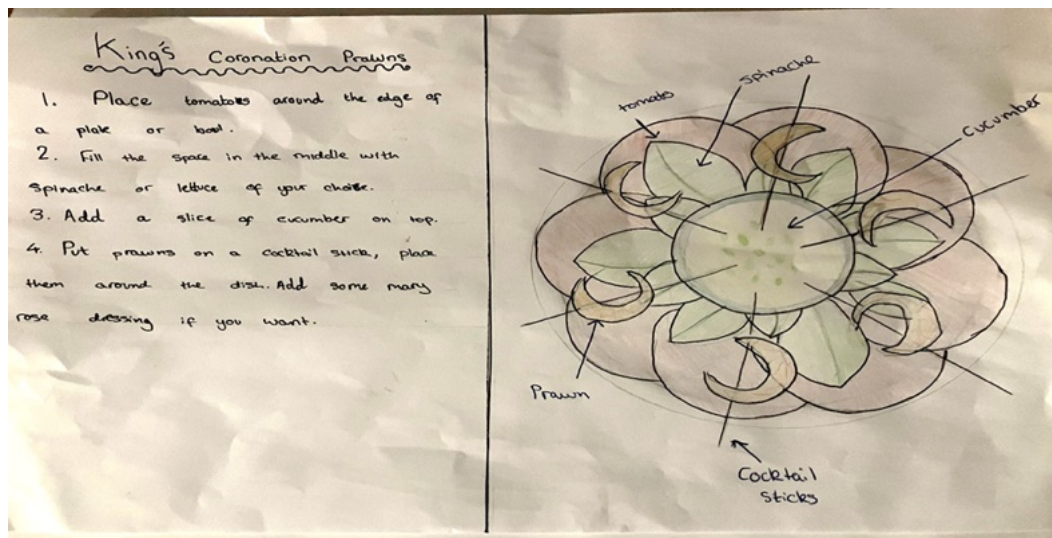


Our judge, Elizabeth Hine (President of The Chiltern Ladies and Bookings Secretary for Ellesborough Parish Hall) had a hard time picking three winning entries.



We would like to thank all the children who took part, they all received a 50 pence Coronation coin and the winners now have chef's white hats and aprons to wear in their kitchens.

Recipe Competition



The Coronation



The cake auction by Jenny



God Save Our Gracious King



The tombola and sweet stall



Sharing the coronation cake



The cake ladies



The recipe winners

Big Lunch



Enjoying the music!



The band



The Bar



The cakes look good !



Dan's Barbeque



Hey Ho Silver Lining

Spring Turns to Sun

Summer will be here before we've finished our Spring chores! The cooler weather has meant a chance to get into the garden with renewed purpose, and the trees are responding to longer days by showing us their green glory. It has been an eventful Spring here – sadness and joy to keep our thoughts and emotions active.

Debbie Lee

Very sadly, Debbie Lee died unexpectedly and suddenly at home on March 19. Debbie had been a village stalwart for more than 30 years, giving her time and copious energy to local residents and events. Debbie was only 73 at the time of her death, much too soon for someone with so much to give. She is survived by her daughter Victoria and son Charles, as well as her three grandchildren, Winnie, Cressida, and Wilbur.

Her 'other earlier life', as Debbie called it, centred around equestrian competition. She learned to ride aged 6 and was an event rider until 1976. She was a Team Gold and Individual Silver medal winner for the British team at the 1971 European Championships, was selected for the 1972 Munich Olympics team, but had to withdraw at the eleventh hour, and won Bronze at the 1973 European Championships.

Debbie and her late husband Tim moved to Dunsmore in 1993, and they regularly provided space and help with DVHA events. They hosted the Dunsmore Village Summer Ball in their garden for a number of years, a huge feat of organisation and effort. When the Millennium appeared on the horizon, they offered their home and garden to friends and villagers again, despite the time and toil involved. Debbie was a keen and talented gardener, and the Lees opened their lovely garden when a fund-raising 'Open Gardens' event was held in the village. Debbie regularly assisted with the catering for the Dunsmore Village Summer Ball.

For more than five years, Debbie served as secretary to the DVHA. She organised the cake bakers for the 30 ELLESBOROUGH MAGAZINE

church Cream Teas, along with baking her famous Victoria sponge for every event. Debbie also collected door-to-door for the Poppy Appeal for 20 years until just recently. Vehemently opposed to HS2, she helped man the Stop HS2 market stand in Wendover.

A quiet, thoughtful, private person, Debbie shunned the spotlight, taking pride in doing her duty, her 'bit', behind the scenes. She was a loyal friend, loving mother and grandmother, and was always willing to step up and fill a need should the occasion arise. She will be terribly missed.

Debbie Lee



DVHA

Dunsmore Village Hall Association events have provided much joy this Spring, to lighten our lives when the weather didn't. The Village

Summer in Dunsmore

Cleanup saw volunteers tackling the roads and hedgerows, windows and signage. And as a special – now annual! – treat, Chris and Alice Minchell took villagers and pooches on their Bluebell Walk. Alas, no flowering bluebells were sighted, but it didn't rain! So that – and the bacon butties afterwards --was very welcome. First Friday 'pub nights' are being held regularly in the Village Hall, and they are open to any and all comers.

Next on the agenda is Summer Celebration on the Common.

This popular event will be held on Sunday, July 2, so keep an eye out for a poster on the notice board and an email in your inbox for further details. If you'd like to volunteer to help plan and prepare for the event, or to help set up and clear up on the day, please contact DVHA chair Tod Weller.

The DVHA's very own Cream Tea

will be held at the Church of the Resurrection on Sunday, August 20. Village bakers will be contacted to offer their services, and help will also be required for setup, serving, and clearing afterwards. So do please offer your assistance



To celebrate the coronation of King Charles III,

a special Coronation Party was held in the Village Hall on May 6. This extremely well-attended event – around 50 villagers – included a special Coronation Cocktail, developed by the DVHA committee. A 'Best Crown competition' spurred adults and youngsters alike to get their creative juices flowing. Ryan Lord was winner in the children's section, while Vanessa Havard blew everyone away with her adult winner. Thanks, too, to Elysia Havard for her beautiful bunting which festooned the hall, and to Andy Charles for these photos.



The Chiltern Ladies

March

The March meeting was our first AGM. The Officers gave very encouraging and lively reports on the success of the first year of The Chiltern Ladies. Elizabeth Hine was re-elected President. The annual subscription remains at £25.

There was the usual business including news of day trips and outings on offer, to Hampton Court Palace, Kelmscott Manor, ([the home of William Morris, in the Cotswolds), to be followed by lunch in Burford, an autumn holiday in Scotland and an overnight trip to Thursford to see the famous Christmas Spectacular. There was also news of a craft workshop, making scented candles on 24th May. A coffee morning, followed by lunch was held on International Women's Day, at the Red Lion in Wendover. Visitors, friends and family are always welcome. Do get in touch! Details can be found in the front of this magazine.

This month's speaker was local girl Sarah Webb, who told us about climbing Mount Kilimanjaro raising money for the South Central Ambulance Charity. Sarah, herself a paramedic, flew to Kilimanjaro in Tanzania. Then the climb took 7 days. Porters carried their equipment which included tents for sleeping, cooking, and toilets. The porters cleared the areas before they left and were already at the next camp before the hikers arrived with welcoming cups of tea and supper. They also cleaned the hikers' boots every day. Sarah experienced several days of altitude sickness, but managed to reach the summit. Congratulations from The Chiltern Ladies, who had sponsored her and had collected £200.

Closing the meeting - members said a sad farewell to Madeline Holmes who is leaving Kimble for pastures new. She was the committee member responsible for communications. We will miss her, and her cheerful emails, she will be a very hard act to follow.

April

There was sad news of the death of our friend Cynthia Fitzjohn. A minute of silence was observed to think of our lovely, very popular member. She will be so sadly missed.

Our speaker was Elizabeth Norris telling us about her charity 'Women and Girls'.

She is a trustee of the charity which provides washable, hygienic sanitary protection for women and girls in the rural areas of India, offering comfort, dignity and freedom. The pads will last up to 2 years. These products are made in India, supporting local industry and keeping the money in the local community. Elizabeth's mother used to call sanitary towels 'bunnies' and so Elizabeth decided to knit bunnies as a fundraiser. They sell for £5 each, the same amount it costs to provide a pack of the reusable sanitary pads, which means a woman or a girl need not be excluded from everyday life. Elizabeth brought along a basket of her gorgeous little bunnies for sale, and all were sold. 'Women and Girls' is The Chiltern Ladies' Charity of the Year, and we will continue to raise money throughout 2023. Donations are very welcome.

May

At the May meeting, we were dressed in red, white and blue in honour of our new King. Members joined together in singing The National Anthem. The bunting was up and a beautiful Coronation cake had been baked and decorated by Beverly Russell.

Our speaker was local man Keith Muras, drawing on his personal experiences as a British diplomat, who in the early 80's was living and working in Soviet Russia for 3 years, based in Moscow during the depths of the 'Cold War'. Keith spoke of the continued unwelcome presence of the KGB during his time there, experiencing the challenges of their spying successes and failures and their plots and actions against British citizens in Soviet Russia. It was a very interesting and rather topical talk. At the end of the meeting, the President presented all members and guests with a mint King Charles III coin, and some Coronation chocolate in a pretty organza bag.

E.H.

Gardening in Ellesborough

What a cold, wet and dismal April we have had and that following a long cold winter. What happened to Spring? I do not think we have been so behind with gardening for years. Now in May it is a scramble to catch up. It only takes a day or so with the warmth of the sun breaking through and the spirits are lifted with the sheer exuberance of the growth of just about everything, seemingly all at once.

Winter and spring flowers came and went to cheer us up in the dismal weather and what a show we had from tulips. Just now it seems an endless list of colour and lush greens. The Head Gardener (HG) is in overdrive and having cleared a lot of plants grown for the Kimble and Ellesborough Horticultural Society annual plant sale (a record this year) from the greenhouse, is now doing battle with those most vigorous of all plants, the weeds. Grass has invaded borders as never before and ground elder, her greatest enemy has sinuously found its way out of the backs of borders and under paths, craftily hidden in the roots of shrubs and perennial plants and stands defiantly triumphant. I mummer words like “at least its ground cover” and “let it re-wild” and she looks pityingly at me – wordless. For the HG, gardening is also about a battle to control nature.

The gardening media has gone overboard with ideas about it being environmentally good to let gardens go wild and it is becoming the fashion to let weeds flourish. The ‘No Mow May’ is an example and that a time when grass is growing as much 3 inches a week; it seems we are to see “wild” gardens up for awards at Chelsea. Those of us who have gardened and experienced over many years the long history of horticultural fashions that come and rapidly go, will view with scepticism the latest. A little while ago a television documentary compared the environmental impact of different gardens, ranged from virtual wildernesses to highly manicured, as measured by insect and pollinator activity, and found that the balanced garden with wild flowers and a wide range of cultivated plants in succession across the seasons was the richest source.

We have for years enjoyed the environmentally friendly summer long delights of a small wildflower meadow and have made the most of creating semi-wild areas with stacked logs rotting down, an expanse of nettles, brambles and hedges of mixed indigenous all with minimal interference as an extension of the main cultivated garden.

From ancient times, records of gardens are a testament to the human need not to be overwhelmed by nature, to keep it in its place, with order and structure near wthe home opening out to wilderness at a distance. So too the need to produce home grown vegetables, salad stuff and fruit, maybe more needed nowadays than in a wartime crisis.

Gardeners are all bemoaning losses from the ravages of the last winter and the harsh summer drought of 2022. Shrubs and plants we have complacently assumed during the recent series of milder winters were secure, have been knocked back and many lost. Even specialist nurseries have had losses and the demand for replacements which, in addition to sky-high heating and transport costs, have pushed up prices. Our biggest perennial loss in size was a Phormium, a plant native to New Zealand, which may have been killed off by the drought last summer rather than the frosts in the winter. It had been a very large, spectacular feature for many years with 4ft long leaves and produced long flower stems, it had expanded to a 4 ft round core which took a lot of digging out with the aid of a friend. Gone too are several Hebes, and a Cordyline palm tree. The local refuse tips are full of the garden disasters.

Nevertheless, optimistically (or foolhardy) as ever, we start to replace the losses and take the opportunity of new plantings while trying to anticipate the new normal of extremes in climate. More to the point we are at last getting some warmer days and as the tulips give way to the alliums, roses and delphiniums bud up and colour and lush greens predominate as summer promises.

TY May 2023



Church of the Resurrection, Dunsmore

Our Easter Day Holy Communion was led by Ian Ogilvy, we were pleased to welcome some new villagers to the service as well as our regular congregation.

Our first cream tea of the year will be on 21st May and at the moment the weather forecast is looking promising. Our three teas this year all start at 2.30pm and finish at 5.00pm, please note that we can only accept CASH. Our cakes are all homemade and we include a free refill in the cost of

a cup of tea or coffee. The cream teas are the major source of funding for the church and although we all got used to sitting outside whatever the weather during Covid we definitely have more visitors on warm sunny days. The other two cream teas will be on the 18th June and the 9th July, both from 2.30pm to 5.00pm. We would like to thank all those who come and support us and all those who provide the cakes and help on the day. We look forward to seeing both our 'regulars' and new faces this year.

Cream Teas at Dunsmore Church



Truly Scrumptious Cream Teas with Homemade
Cakes & Scones! Free refills of tea & coffee

Do come along and join us and enjoy our
friendly Chiltern Village—please bring cash

2.30—5.00pm

Sunday, 21st May 2023

Sunday, 18th June 2023

Sunday, 9th July 2023

Proceeds go to the maintenance of our lovely village church

School News

May 2023

Great Kimble C of E School

Church Lane

Great Kimble

Nr. Aylesbury

Bucks. HP17 9TH

Telephone: 01844 346189

E Mail: office@gkglt.co.uk

Interim Headteacher: Mrs C Lodge



Spring Term was a fun filled term, with a trip to Hazzard Alley and whole school STEM week. The classes performed for parents at St Nicholas Church over the term and in the school Easter Service.

STEM Week

In March, the whole school took part in STEM week (Science, Technology, Engineering and Maths). We started with a bang, quite literally, with a Fire show by Science Oxford. Science Oxford also ran a show on 'Amazing Animals' and a workshop to see which pair could make the marble go down a slope at the slowest rate. KS1 had a 'rocket mice' workshop and made a rainbow with skittles by dissolving the colour off of them. One of our school parents ran a workshop about 'net zero' and we all learnt a lot!

The children also spent time answering the questions such as, "how can we make a bridge out of paper to hold the most pennies?". In KS2, the children were investigating whether they can send messages around corners using Morse Code and torches. They did lots of research and practice sending and receiving messages in code before using mirrors to look around corners. They discussed what techniques people used to send their messages and whether it was easier in the light or in the dark.

Church News

We thoroughly enjoyed sharing a jam-packed school Easter Service at St Nicholas Church. Each

class performed songs and poems, recorder club performed their first public performance and the school choir sang a song, accompanied by Reverend Janet Wales on the keyboard. Many of the Great Kimble children also enjoy taking part in St Nic's Kids service once a month at the church. Why don't you join them?

World Autism Acceptance Week

We have been supporting the National Autistic Society by taking part in World Autism Acceptance Week. Over the week the children took part in activities to learn and understand more about autism. The week ended in 'Funtime Friday', when we all dressed in our colourful onesies to celebrate our differences.

King Coronation

We joined The Eden Project 'Big Coronation Lunch' event to commemorate the Kings Coronation. The children ate lunch with others from their school Houses (Hawks, Falcons, Eagles and Kites), they took part in a baking competition, a crown competition and performed a coronation song to their parents at the end of the school day. Great fun was had by all!

Summer Term Fun

The summer term is also full of fun activities. We are hosting an African drumming workshop where the children will spend the day learning different rhythms and practicing a performance for other classes across the school. We are also excited to be hatching chicks, which all the children will enjoy.

Social Media

Our school Facebook page can be found by searching 'Great Kimble School'. Please 'like' our page and share our news so we can celebrate our successes with the local community.

Mrs Lodge, Headteacher

Ellesborough Parish Council Chairman's Notes

17th May 2023

Village Coronation Party 7th May

On a sunny Sunday, we experienced a regal day at the Village Hall, where live music and local produce was enjoyed by many families and friends. I am not quite sure any us expected to see the car park swaying to "Sweet Caroline", but it appeared to prove popular !

Thank you to the Organising Committee, Church Cake Stall, Buckmoorend Farm, Natasha Marsh for singing the National Anthem, the Sticky Jack band and the many volunteers on the day.

The Parish Council would also like to particularly thank the following, for their generous donations to the event;

- Chiltern Brewery for donating an excellent and refreshing Coronation Ale and an enormous cake.
- Chequers Estate for donating an impressive Biscoff Cake.
- HS2 for their financial contribution towards the live band.

As result, we not only had a great community event we are also able to make Charity donations to both Wendover Dementia Care and the Chiltern MS Centre.

Dunsmore Pond.

As Spring is now in full bloom, we are pleased to hear that the efforts of the Dunsmore Pond team are starting to show positive results. The pond has been rejuvenated by a team of Dunsmore residents and advisors from Bucks Beds Oxon Wildlife Trust (BBOWT) and we understand that the flora and fauna is now returning in numbers.

Road Safety

Without doubt the most regular correspondence received by EPC is in relation to speeding in the Village. Cllrs have regular meetings

36 ELLESBOROUGH MAGAZINE

and email correspondence with Bucks and Thames Valley Police to try to address these issues and more time is spent on this than any other duties.

It remains a frustrating process for all involved. A recent example is that EKFB (HS2) were initially supportive in making improvements to the bus stop on the A4010 at the petrol station, where a number of accidents have already occurred, to provide hard standing and bollards to protect those waiting for public transport, however, they can no longer help with this matter and we will now have to go back to Bucks Council, as this remains a high risk site.

EPC have procured a grant for new Vehicle Activated Speed cameras, however Bucks have just introduced some fresh bureaucracy which will delay their physical installation, but we are trying our best to get these up and working in the next few months.

We know that Speedwatch makes a difference, but it still needs more volunteers please.

We also know that some drivers simply do not care about speeding and perhaps the only way to really get this dealt with is to install physical road traffic calming, the challenge here is that these measures will require permanent street lighting and historically the general consensus in the Village has been to resist street lighting, so if there are any other suggestions please keep them coming.

RAH Update

The Chalkshire Road planning application for 6 x semi-detached affordable houses continues to remain undetermined. EPC submitted further suggested amendments to the revised plans in March and we understand that Bucks Council are still in discussion with Hastoe Housing about when the application will be heard at Planning Committee. The latest update is that Bucks Council have extended their target deadline for determination to 30th June 2023.

Vacancy

EPC continue to seek a new Councillor and appeal to all Parishioners who may be interested to contact the Clerk. All existing Councillors have jobs and if there are 6 rather than 5, we can make more progress with the various tasks, such as trying to get road safety in the Village improved.

Bugler

If anyone is a bugler or knows of one available for

the Remembrance Service later this year, please do let us know. We would like to carry on the tradition of a live bugler.

Community Events

11th June - Buckmoorend Farm are hosting a Leaf Open Farm Sunday, this is an initiative to help understand how a working farm operates and the story behind our food and the management of the countryside. www.buckmoorendfarm.co.uk

24th June – Party in the Park, Wades Park, Princes Risborough. North West Chilterns Community Board are hosting, a free to enter, family fun day between 11am and 4pm.

Parish Updates

EPC hold approximately 180 email addresses and this is the primary communication tool used to provide regular updates on matters such as road closures, local events, Parish meetings etc. If you would find this useful please do ask the Clerk to add you to this circulation list.

The Clerk is best contacted at: Clerk@ellesborough-pc.gov.uk and can provide further detail on any of the above matters.

Thank you

Matthew McGrail

Chairman of Ellesborough Parish Council

Outcome of the village litter pick. see Page 6.



Planning Applications

Conversion and associated building works to the existing ancillary residential building to form additional habitable space ancillary to the existing dwelling.

Brockwell Farm Missenden Road Butlers Cross
Buckinghamshire HP17 0UX

Ref. No: 23/05474/FUL | Received: Thu 16 Feb 2023 | Validated: Thu 16 Feb 2023 | Status: Awaiting decision

Certificate of lawfulness for proposed installation of 16 solar panels on rear main roof south elevation

Honeywood Risborough Road Terrick
Buckinghamshire HP17 0UB

Ref. No: 23/05335/CLP | Received: Mon 06 Feb 2023 | Validated: Mon 06 Feb 2023 | Status: Unknown

Certificate of lawfulness for existing continued breach of condition 2 of planning permission WR/31/52 for a period in excess of 10 years from the date of this application

Widnell Farm Rignall Road Little Hampden
Buckinghamshire HP16 9PT

Ref. No: 22/07458/CLE | Received: Fri 09 Sep 2022 | Validated: Fri 09 Sep 2022 | Status: Unknown

Construction of single storey rear extension

Ellesborough Guide Centre Missenden Road
Butlers Cross Buckinghamshire HP17 0UP

Ref. No: 23/05310/FUL | Received: Thu 02 Feb 2023 | Validated: Thu 02 Feb 2023 | Status: Decided

(continued overleaf)

Planning Cont.

Householder application for construction of part single storey, part two storey rear extension, first floor side extension, fenestration alterations, new porch and patio amendments to the rear

5 Springs Close Ellesborough. HP17 0XE.

Ref.No:23/05705/FUL | Received:Mon13Mar2023 | Validated:Mon13Mar2023 | Status:Awaiting decision

Certificate of lawfulness for proposed dropped kerb

6 Beacon View Ellesborough Road Butlers Cross Buckinghamshire HP17 0XB

Ref. No: 23/05712/CLP | Received: Mon 13 Mar 2023 | Validated: Mon 13 Mar 2023 | Status: Awaiting decision

Householder application for construction of single storey rear infill extension and alterations

15 Chalkshire Cottages Chalkshire Road Butlers Cross Buckinghamshire HP17 0TW

Ref. No: 23/05556/FUL | Received: Fri 24 Feb 2023 | Validated: Tue 21 Mar 2023 | Status: Unknown

Householder application for conversion of existing single storey detached outbuilding with the construction of an entrance porch, to form ancillary accommodation to main dwellinghouse.

Ref. No: 23/05005/FUL | Received: Wed 04 Jan 2023 | Validated: Tue 14 Mar 2023 | Status: Awaiting decision

Address The Honeyfield Chalkshire Road Butlers Cross Buckinghamshire HP17 0TR

Proposal Restructure crown below previous pruning points (approx. 12 metres) to approximately 9 metres from ground level to form lower more manageable pollard x w Willow (T1)

Ref: PP-12117564

The Honeyfield Chalkshire Road Butlers Cross Buckinghamshire HP17 0TR

Golf Club Promotions

GIRLS GOLF ROCKS

#GIRLSGOLFRCKS

LEARN TO PLAY GOLF IN A WAY THAT ROCKS!

- Open to all girls aged 5-18 years
- £40 for six weeks coaching
- No experience necessary
- No equipment required, just wear comfy clothes and trainers, and join the fun!

ELLESBOROUGH GOLF CLUB HP17 0TZ

COACHING OPTIONS

Option 1: Coaching Course
Every Saturday 10:00 - 11:00
from 13th May - 17th June

Option 2: Coaching Course
Every Tuesday 17:30 - 18:30
from 13th June - 18th July

For more information or to book your place go

Golf for Women

Girls & ladies, join us for a free fun taster session at Ellesborough Golf Club
1st July 2023 @ 2pm
No equipment necessary

Have you thought about playing golf?

Are you looking for a new hobby?

Do you want to keep fit and active?

Do you want to enjoy a friendly atmosphere and busy social life?

To book your place, simply email office@ellesboroughgolf.co.uk by 16th June 2023

www.ellesboroughgolf.co.uk



Magnificent show of art by local artists at Discover Bucks Museum

Discover Bucks Museum is delighted with the response it has had from both amateur and professional artists and craftspeople from across Buckinghamshire for their Open Art Exhibition.

In all 140 artists submitted almost 400 pieces of work for selection from which 200 pieces are on show in the exhibition. The show is a rich and varied feast of art which showcases the great creative talent in the county and includes paintings, prints, ceramics, photography, sculpture and glass. Many artists on show are taking part in Bucks Art Weeks so a visit to the exhibition is a great opportunity to get a taste of a variety of artists' work before visiting them in their studios. There is also work on display from artists who are exhibiting for the very first time.

Three prizes were awarded by a judging panel and the winners were announced at the exhibition launch on 28 April.

First prize of £250 was awarded to Karen Martin for her stunning painting in acrylic and mixed media called 'Promise of Summer' (below).



Second prize of £100 was won by Richard Ballantyne for his original sculpture of a raven sitting on a garden sprayer (below).



Third prize of £75 went to Marie Jones for her beautifully intricate embroidery called 'Salt Water Calm' (below).



There is also a fourth prize where visitors can vote for their favourite artwork when they visit the exhibition and the artist with the most votes will win the Visitors Choice Award of £100. Voting closes on 28 June 2023 so have fun choosing your favourite.

The exhibition is open now and runs until Saturday 8 July 2023 in the Museum's beautiful art gallery. Many pieces of art are for sale. Admission to the Museum is £5.50 which gives 12 months free entry and children are free. Discover more here.

For further enquiries please contact: David Erskine, Exhibitions and Marketing Manager, Discover Bucks Museum

derskine@discoverbucksmuseum.org

The 50plus

50plus began as a handyman service some 21 years ago. Today the service portfolio has grown to include a broad set of home repair, improvement and commercial services and very much in keeping with the company's name, a range of services for the elderly.

50plus was originally conceived as a means of providing employment for those aged 50plus and the company continues with this concept. The idea of using mature service providers together with a service orientated structure also chimes with customers who are 50plus and the company reports that the majority of its domestic customers are 65 plus!

50plus is run from a head office in Buckinghamshire with field staff distributed over a wide area including Ellesborough and the surrounds. In keeping with the times the company offers online services in addition to telephone booking and has embraced technology to provide a range of easy to use technically enabled services for our elderly customers.

Telephones (and today email, text, web enquiries, WhatsApp and more) are answered, advice is provided and appointments are run on a date and time basis. As they say: they are different - it's all about the service.



In addition to booking and administrative staff, the head office has personnel who provide technical support and advice for both customers and service providers. They also maintain an on-line 'knowledge centre' on the company's web site where hints and advice on what needs doing, what to look for and how long repairs may take.

To find out more about what 50plus does and the services they offer visit the 50plus web site at www.the50plus.co.uk or call 01296 329 118.

If you would like to work for 50plus please visit the website and click on Providers/Become a Service Provider.

Live-in care trial

Are you considering care options for a relative or even yourself – why not try a live-in care trial to see the benefits of staying in your own home with just the right amount of help to enable you to remain as independent as possible.

Tackling a conversation with a loved family member about their care needs and whether or not, they can continue to live independently at home, is daunting at the best of times but in the current difficult economic climate even more so. However, it is so important to look at all options. Far too many families automatically assume that an elderly relative needs to go into a residential care home when daily tasks start to become difficult, but this is not necessarily the case. In fact, research shows that person-centred one-to-one care in the comfort of one's own home results in far better emotional health as well as physical health. Most people want to remain at home for as long as possible and live-in home care is certainly the oldest and most respected form of social care, just little known in the UK.

The best way to see if it's suitable for you and your family is to give it a try. Ashridge Home Care is a family run independent care business which offers a Live-In Care Trial Service so you can see exactly what it is like having a carer live at home with you. Understandably many people are nervous about inviting a stranger into their home. However, Ashridge carefully matches carers with clients so that not only are their medical and physical care needs met but to ensure that common interests are shared and the all-important underlying values are compatible to live together.

Company founder and local resident Trudi Scrivener commented: "We often have phone calls from concerned family members telling us they are worried about a loved one but that they are nervous about suggesting a live-in carer to stay long term. We recognise that this is a huge decision to be made and cannot be taken lightly, hence we offer a live-in care trial so they can see exactly what the process involves. It is only natural to be nervous about a change in circumstance, so we are trying to reassure people that live-in care is totally tailored to each unique family situation and does not need to be intrusive."

The trial involves a free consultation with a Care Manager, this can be either in person or over the phone, who then puts together a bespoke Care package. The Care Manager sources a suitable live-in carer for you to be matched with and you will be given a detailed carer profile outlining their experience, training qualifications as well as interests and hobbies to see if there is a suitable match. The Care Manager will also offer clear information on costs so you can make a considered care decision.

Trudi continued: "In the UK there is not a great deal of awareness about live-in care options whereas in Europe the social care system is much more advanced and the benefits for staying at home are well advertised. We often hear from relatives that they think they can't afford a live-in carer but particularly for couples - live-in care can work out significantly cheaper than being moved into a residential care home. Our live-in care trial service gives you the perfect opportunity to see what is involved and if it's for you."

Ashridge's Care Manager describes a typical scenario: "We recently had a client who booked live-in care for 2 weeks following a hospital stay. She was extremely anxious about having a carer living with her and was very clear that it would be short term, however, she soon realised how supportive and helpful the carer was, allowing her to live more independently and enjoy life again. She made the decision to book live-in care on an ongoing basis."

For a free trial telephone Ashridge Home Care on Tel: 01494 917 344

Wendover Antiques

Dandelion Forcers

Dandelion forcers are extremely rare. They are something between a rhubarb forcer and a tall narrow terracotta chimney. Cultivating dandelions became popular because of their medicinal properties, it was not thought of as a weed, but as a common herb as it is rich in nutrients.

The Chinese were the first to recognise the dandelion's attributes and used it for purifying the blood and helping the immune system. In the 10 th / 11 th Century the Arabic physicians found it helped the liver and the kidneys. The first mention of 'dandelion' in this Country is in Welsh medicines in the 13 th Century. It became popular in Europe and could be found in kitchens and medicine cabinets.

Every part of the plant is useful, the root, leaves and flower. The creamy juice is supposed to remove warts, but it didn't work for my father!

The origin of the word dandelion comes from Medieval Latin 'dens leonis', lion's tooth, because

of the jagged leaves. They were called 'fairy clocks' because their flowers open to greet the sun and close in the evening. It is the only flower which represents the three celestial bodies, the sun, the moon and the stars.

In Victorian Flower Language the dandelion symbolises love, it was also known for wishes, welcome, faithfulness, divination, grief and bitterness. Used as a tool for divination – if you blow on a seed head the number of seeds left are the number of children you will have.

There are many recipes from Pink Dandelion Wine and Dandelion Root Coffee to Dandelion Honey and Jelly. Young leaves can be cooked like spinach, used in salads, stir-fries or soup, the flowers are sweet and crunchy and the roots can be roasted. A good variation for a summer salad.

Nicky Gregory








FOREVER CYCLING

TRAVEL THE WORLD FROM THE
COMFORT OF YOUR OWN
COMMUNITY CENTRE!

ALL SESSIONS COST

£4

(Includes a free
tea or coffee!)

Where? - Ellesborough Parish Hall
When? - Every other Thursday from 27th April
Time? - 1:15pm - 2:15pm

Please contact us to book a space!

Email: joe.barnard@aitc.org.uk Phone: 07399748803

Website: aitc.org.uk/forever-cycling



Your local radio station for Ellesborough,
Butlers Cross, Terrick and the Kimbles

- ◆ Classic hits and recent releases
- ◆ Local news stories every day
- ◆ Detailed information about forthcoming local events

Monday to Friday

- 7.00 am Red Kite Breakfast** Alan Taberer gets your morning off to the perfect start (Mon, Wed, Fri only)
- 10.00 The Mid-Morning Show** Classic hits, recent releases plus plenty of local information with Howard Bond
- 12.00 pm The Weekday Lunchbox** Music, features and chat with Sally Poulson
- 2.00 pm The Afternoon Show** Fine music plus features and chat with Maggie G
- 4.00 Drivetime** Music and local travel news with Mike Oxlade (Mon, Tue only)
- 6.00 The Gold Kite** Back-to-back classic hits
- 7.00 Monday The Seventies Rewind** with Simon Jobling
- Tuesday The Nineties Rewind** Classic 90s hits
- Wednesday The Eighties Rewind** with Howard Bond
- Thursday The Sixties Rewind** with Cherry Waller
- Friday The Weekend Warm-Up** 90s and 00s dance tracks with Karl Braisher
- 9.00 Monday The Musicals Hour** with James Kershaw
- Tuesday, Thursday Motown Magic** Classic Tamla Motown hits
- Wednesday Red Kite Country** Country hits old and new
- 10.00 The Weekday Wind-Down** Chill at the end of the day with Donald McFarlane
- 11.00 Through the Night** Non-stop hits from the 60s, 70s, 80s and 90s

Saturday

- 7.00 am Saturday Breakfast** Your weekend starts here! With Andrew Duthie
- 10.00 The Noughties 'Til Now Show** 20-plus years of hits with Hannah Austin
- 12.00 pm The Saturday Lunchbox** Music across the generations with Heather Jan Brunt
- 1.00 Saturday Sport** Music plus local and national sports news
- 5.00 The Funk, Soul & Dance Show** Smooth, cool sounds with Deep Kundhi
- 7.00 Red Kite Party Night** Four hours of classic party hits, with Daryl Ridgley
- 11.00 Through the Night** Non-stop hits from the 60s, 70s, 80s and 90s

Sunday

- 7.00 am Sunday Breakfast**
- 10.00 Sunday Brunch** Classic hits and chat with John Reid-Hansen, including the **Wychert Vale Church Service** at 12.00
- 1.00 pm The Sunday Afternoon Session** with Andy Mitchell, including **The Acoustic Hour** at 3.00
- 4.00 Musicals Hour** with James Kershaw
- 5.00 The Noughties 'Til Now Show** 20-plus years of hits with Hannah Austin
- 7.00 Sunday Rocks!** Three whole hours of classic rock tracks with Mark Squires
- 10.00 The Breakaway Blues Show** with Graham Andrews
- 11.00 Through the Night** Non-stop hits from the 60s, 70s, 80s and 90s

107.2 FM ◆ Smart speaker ◆ Online at redkiteradio.com

VILLAGE ENVIRONMENTAL SERVICES DOMESTIC DRAIN SERVICES

Proprietor: Dennis Cook
Est. 1979

**24/7
CALLOUT
SERVICE**

BLOCKED DRAINS?

CALL US DAY OR NIGHT

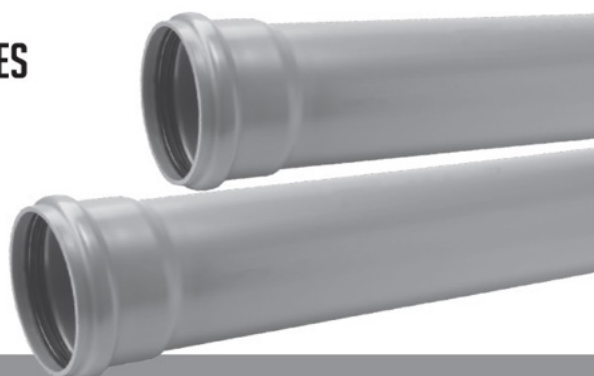
FAMILY RUN BUSINESS SINCE 1979

BLOCKED DRAINS CLEARED • REASONABLE RATES

**NO EXTRA CHARGE FOR EVENING, WEEKEND
OR BANK HOLIDAY CALLOUTS**

CCTV DRAIN SURVEYS

FULL PUBLIC LIABILITY INSURANCE



07850 635 844
01296 624 221 (MESSAGES)



Anthony's Servicing



GAS-OIL-LPG

Service and maintenance of boilers, fires and AGA/Rayburns

Landlords Safety Inspections

Local family run business with over 30 years' experience

Service Plans now available with additional benefits

Office 01296658419 Mobile 07973911674

Website www.anthonyservice.co.uk

Email anthonys.service@gmail.com

Facebook <https://www.facebook.com/anthonyservicing>



Checkatrade.com
Where reputation matters

— COOK —

Sweeney's Budgens

“Gorgeous meals, great quality, so impressed.”

★ Trustpilot ★★★★★ Colin



Roasted Vegetable Lasagne

SWEENEY'S
Budgens

Sweeney's Budgens • High Street
Wendover • HP22 6EA

HOME REARED MEATS,
LOCAL PRODUCE
& HOME COOKED FOOD

BESPOKE GIFT HAMPERS



Free Home Delivery
& Collections

Chequers Estate | HP17 0UT
SHOP Tues- Sun 10-4
KITCHEN Fri-Sun 10-4
www.buckmoorendfarm.co.uk



ART CLASSES FOR ADULTS

Our next course starts in
April

Ellesborough Parish Hall

Ellesborough Rd
Butlers Cross
Bucks HP17 0XA

On Tuesdays

9.30am to 12.30pm

1.30pm to 4.30pm

On Fridays

9.30am to 12.30pm

1.30pm to 4.30pm

be **AMAZED**
at what **YOU**
CAN **ACHIEVE**

www.colourwheelartclass.co.uk
01494 972384 - Stacey@colourwheelartclass.co.uk

AIRS HOUSE

FOR

QUALITY CARPETS

TILES, VINYL & WOOD
FLOORING

DOMESTIC & COMMERCIAL
INSURANCE ESTIMATES
ADAPTION & REPAIRS

Email: sales@airshouse.co.uk

PRINCES RISBOROUGH

TEL & FAX

01844-342546

Station Parade • Summerleys Road

extremeclean.co.uk

Superior Cleaning and Application of Protectors

Carpet, Upholstery, Leather
Modern & Oriental Rugs
Curtains

Tile & Grout/Stone Flooring
Anti-Allergen Treatment
Specialist Stain Removal
Wood Floor Refinishing

Paul Brooker

35 Place Farm Way, Monks Risborough
Bucks HP27 9JJ

T: 01844 346379 / 344735

M: 07866 376934 E: jjjp@uwclub.net

www.extremeclean.co.uk

VILLAGE COMMUNICATIONS KEEP IN TOUCH

ELLESBOROUGH MAGAZINE
4 Times a year

ELLESBOROUGH MAGAZINE IN LINE
ellesborough-pc-gov.uk

PARISH COUNCIL UPDATE
clerk@ellesborough-pc-gov.uk

FACEBOOK
"Your Ellesborough" group

WHATSAPP
"Ellesborough Follies"
friendly unofficial group

BRENDAN MCFALL

PAINTER & DECORATOR

INTERIOR & EXTERIOR

MOBILE	LANDLINE
07581 693653	01296 294175



brendanmcfall511@btinternet.com

Ellesborough Magazine Advertising Rate Card 2023

Quarterly, hand delivered to 500 households in
Ellesborough, Butlers Cross, Dunsmore, Nash Lea & Terrick.

Rate Card 2023:

Page	Approx size	Orientation	1 Issue B&W	1 year – 10%	1 Issue Colour	1 year – 10%
Full	A4 (Full page)	Portrait	£55	£200	£66	£238
Half	A5 (notepad)	Landscape	£35	£128	£42	£251
Quarter	A6 (postcard)	Portrait	£23	£83	£27	£98

Yearly Subscription Offer:

Advance payment entitles a 10% discount for all four issues.

Colour Pages:
Plus 20%.

Cover Pages (in colour):


Plus 25%, "first come, first served" basis. Half or full page ads only.

Deadlines:

9th May for June issue,
10th August for September issue
10th November for December issue
10th of February for March issues

Contact:

Correspondence and all copy to Annabelle Hunting at
ellesboroughmagazine@hotmail.co.uk



**ALL FORMS OF ROOFING
UNDERTAKEN
SPECIALISTS IN
FLAT ROOFING
TILING SLATING LEADWORK**

**GUARANTEED WORK
FREE ESTIMATES**

**Mr P N Thomson
71 Grenvill Avenue, Wendover**

Tel 01296 624369 Mobile 07889 681828



ELLESBOROUGH PARISH HALL

With the improvements to the village hall, have you considered?.....

A large family party or gathering (secure playground for children opposite)

A new music, exercise or art group

A work hub if you are fed up of working from home – maybe a group of you could have a change of scenery

Playgroups

Table top sales

Charity events

Please make any enquiries to Elizabeth Hine on 01296 625912 or
lizziehine@talktalk.net Rates are £15 for the first hour then £12 for every
subsequent hour for weekly bookings or £15 per hour for one off events



The
RUSSELL ARMS
BUTLERS CROSS BUCKINGHAMSHIRE • SINCE 1763

For Everyone : For Every Occasion



***Freshly Prepared Classic & Contemporary Dishes ,
Sandwiches & Bar Snacks***

Wide Selection Of Vegetarian & Vegan Options

Takeaway Available - Call & Collect

Attractive Bar, Restaurant & Beer Garden

Family, Walkers & Dog Friendly

'Being Mindful' - Our Focus On Sustainability

01296 624411 / hello@therussellarms.co.uk / www.therussellarms.co.uk



Looking to visit New Zealand...

For help with creating the best itinerary for you please call or email us

- Experienced Kiwi Specialist Agent
- Friendly, honest advice from an independent travel agency
- Specialists in tailor-making holidays to destinations worldwide
- Extensive experience to arrange every detail
- Using fully bonded tour operators
- No booking fees



Travel Impressions

A World of Experience

01442 890265

enquiries@travelimpressions.co.uk
www.travelimpressions.co.uk

Suite 4, George House, 64 High Street, Tring, Herts. HP23 4AF

Tight for space?



Containers

High quality secure 20ft & 40ft storage containers available to rent.

All units are in excellent condition, vented, watertight and have been treated with anti-condensation paint.

Situated on hard standing, within a locked, access controlled, rural site. Ample space for vehicular loading and unloading.

Competitively priced & located in Stoke Mandeville, HP22 5UZ. For enquiries, contact Charlie on 01296 612448 / email cl@stokefarm.co.uk

Graham Blake soft furnishing

- Loose covers
- Curtains
- Re-Upholstery
- Tracks & Poles

TEN YEAR GUARANTEE

For personal, helpful service, please call

Tel: 01844 261769

Mob: 07801 182400

grahamblake123@btconnect.com

www.grahamblake.com

CONCIERGE - LANDSCAPE - JAN 19/Layout 1 04/01/2019 10:50 Page 1



Concierge Property Maintenance delivers an unsurpassed level of commitment and service personalised to meet every individual property need. Our team of skilled craftsmen truly care about your home or work as if it was their own. If you are a Concierge Premier Member, we guarantee priority attention from our team of skilled craftsmen 24 hours a day, 365 days a year.

We offer high quality workmanship and timely support in all aspects of maintenance including:

- Building works and extensions • Carpentry • Painting & Decorating
 - Kitchen and bathroom design, build and installation
 - Plumbing • Electrical works • CCTV & Alarm services
- Handyman services • Plastering • Flooring • Insurance work



Please contact the team today to see how we can help you.

Tel: 01494 702099

Kings Head House, 15 London Road, Beaconsfield, Bucks HP9 2HB

www.conciergepropertymaintenance.co.uk



Providing Outstanding Home Care

Call for a friendly chat on 01494 917344
or visit ashridgehomecare.co.uk

Ashridge Home Care specialises in providing highly personalised one-to-one care that enables people to remain in the comfort of their own home. It is one of the few care companies to offer both around the clock live-in care or visiting hourly care.



Numbers is here to take care of your accountancy needs so you can focus on your business.

numbers
chartered certified accountants

We are here to help you with:

- Company accounts & corporation tax
- Self assessment tax returns
- Book keeping, VAT (including Making Tax Digital), Payroll & CIS
- Company secretarial services

**Do please give us a call or pop in
to see how we can help.**

Matt Ryan FCCA | Numbers Limited | 01296 620220 | info@numbers-ltd.co.uk
32 High Street, Wendover, Bucks, HP22 6EA | www.numbers-ltd.co.uk



BRADLEY & JONES

FUNERAL DIRECTORS

Renfrew Cottage, Back Street Wendover HP22 6EB

01296 622975 tim@bradleyandjones.co.uk 07711750917

Experts in Plumbing, New Boiler & Central Heating Systems

ANNUAL MAINTENANCE CONTRACTS FROM £85

- Oil & Gas Boiler Replacements
- Repairs & Servicing
- Landlord Gas Safety Certificate
- Full Installations & Upgrades to Heating Systems
- Power Flushing
- All Types of Plumbing



SURAB
L I M I T E D



A local reliable business for over 20 years, we have over 600 satisfied maintenance customers, customers who no longer worry about the possibility of their boiler letting them down

oil
&
gas

plumbing

finance
options
available

annual
maintenance
contracts

FOR FURTHER INFO CALL
01844 274604
www.surab.co.uk

Office @ Old Rifle Range Farm
Great Kimble, Aylesbury HP17 OXS
Finance Available (Written Details on Request)

Directory of Advertisers

Genre	Business Name	Service Provided	Contact	Page
APPLIANCE, REPAIR, GARDENING, HOUSE & CLEANING SERVICES	Airs House	Carpets & Flooring	sales@airshouse.co.uk 01844 342546	49
	Anthony's Servicing	Service & maintenance of boilers, fires, agas/rayburns	anthony.sservice@gmail.com 01296 658419 07973 911674 www.anthonyservice.co.uk	46
	Brendan McFall	Painter & Decorator	brendanmcfall511@btinternet.com 07581 693653 01296 294175	49
	Clements Carpentry	Carpentry & Property Services	clementscarpentry@hotmail.co.uk 01296 625863 07584 201706	59
	Concierge Property Maintenance	Building Work, Carpentry and other Property Services	01494 702099 www.conciergepropertymaintenance.co.uk	52
	Extreme Clean	Cleaning Services Carpet, Flooring & Upholstery Cleaning & Treatments	jjjp@uwclub.net 01844 346379/344735 07866 376934 www.extremecleanco.uk	49
	Graham Blake	Soft Furnishings	grahamblake123@btconnect.com 01844 261769 07801 182400 www.grahamblake.com	52
	M Simmonds	Painter & Decorator	michael@msimmonds.co.uk 01296 655774 07850 499795 www.msimmonds.co.uk	60
	Roofcraft	Specialists in all forms of roofing	01296 624369 07889 681828	50
	Surab	Experts in Plumbing, New Boiler & Central Heating Systems	01844 274604 www.surab.co.uk	55
	The 50 plus Handyman	The 50 plus Handyman	The 50 plus Handyman	59
	Village Environmental Services	Family run domestic drain services with 24/7 callout service	01296 624221 (messages) 07850 635844	45

Directory of Advertisers

Genre	Business Name	Service Provided	Contact	Page
FOOD AND DRINK	Buckmoorend Farm Shop & Kitchen	Farm shop & kitchen selling home reared meats & other local produce as well as hot food & drink	info@buckmoorendfarm.co.uk 01296 624425 www.buckmoorendfarm.co.uk	48
	Chiltern Brewery	Brewery selling award winning ales & tastings	01296 613647 www.chilternbrewery.co.uk	2
	The Russell Arms	A real village pub and restaurant	hello@therussellarms.co.uk 01296 624411 www.therussellarms.co.uk	51
	Sweeneys	Award winning local supermarket		47
ARTS & CRAFTS	Colour Wheel	Art Classes	www.colourwheelartclasses.co.uk 01494 972384	48
CARE AND HEALTH SERVICES	Ashridge Home Care	Care company providing around the clock care in your own home	info@ashridgehomecare.co.uk 01494 917344 www.ashridgehomecare.co.uk	53
FUNERAL SERVICES	Bradley & Jones	Funeral Directors	www.bradleyandjones.co.uk 01296 622975	54
RETAIL	Antiques at Wendover	A datelined antiques centre	01296 625335 www.antiquesatwendover.co.uk	60
ACCOUNTANCY SERVICES	Numbers Limited	Accountancy, Tax and Bookkeeping Services	info@numbers-ltd.co.uk 01296 620220 www.numbers-ltd.co.uk	53
COMPUTER AND INTERNET SERVICES	Wendover Computers	Computer Equipment Supply, Repair and Upgrading	pete@wendover-computers.co.uk 0800 3118385 07881 555482 www.wendover-computers.co.uk	59
TRAVEL SERVICES	Travel Impressions	Independent Travel Agent	enquiries@travelimpressions.co.uk 01442 890265 www.travelimpressions.co.uk	51

DIRECTORY OF LOCAL ORGANISATIONS


Ellesborough Parish Council	Chairman, Matt McGrail	xxxxxxxxxx
	Parish Clerk, Mr John McKeown	07880 732574
	Windward, North Lee Lane, Terrick HP22 5YB	
	Parish Council Update	clerk@ellesborough-pc.gov.uk
Council	Councillor Clive Harriss	07768 876568
- Ridgeway East Ward	Councillor Steve Broadbent	07471 144181
	Councillor David Carroll	see website
Member of Parliament	Greg Smith MP	0207 2194287
		greg.smith.mp@parliament.uk
Ellesborough Parish Hall	Bookings Secretary, Mrs Elizabeth Hine	01296 625912 or lizziehine@talktalk.net
Kimble Stewart Hall	Bookings Secretary, Amanda Robinson	07527 595813
Dunsmore Village Hall Association		dunsmorehallbookings@gmail.com
Ellesborough Magazine	Chairman, Mr Richard Jennings	01296 625498
	Editor:	edellesboroughmgz@gmail.com
	Treasurer, Mr Tony Young	01296 622306
	Distribution, Mrs Janette West	01296 696688
	Secretary, Judith Harper	01296 622033
	Advertising, Annabelle:	ellesboroughmagazine@hotmail.co.uk
Ellesborough Magazine on line		www.ellesborough-pc.gov.uk
Ellesborough Silver Band		www.ellesboroughsilverband.co.uk
Great Kimble Church Of England First School	Headteacher	01844 346189
Kimble and Ellesborough Horticultural Society	Membership Secretary, Charlie Taylor	07710 504300
Chiltern Ladies Group	President, Mrs Elizabeth Hine	lizziehine@talktalk.net
Brownie Guides	Girlguiding Buckinghamshire	girlguidingbucks.org.uk
The Scout Association, Buckinghamshire	Enquiries, County Office	01296 631016
Ellesborough Church	Church Warden, Mr Tony Young	01296 622306
	Treasurer, Paul Couling	07903 162378
	Tower Captain, Mr Les Floyd	01844 345575
Dunsmore Church	Secretary To The Trustees	
	Jacqui Lipton-Rose	07795 143430
Kimble Free Church		01296 612748
Ellesborough Trust	Chairman, Mr Rob Nicholson	01296 612658
	Secretary, Mrs Tracey Davison	07847 969944
The Children's Society Box Coordinator	Zoe Hinton	01844 761600
Community Car	Booking Co-ordinator	01296 317769
Risborough Area Community Bus	Co-ordinator	01296 963097
Facebook	Your Ellesborough	
What's App	Ellesborough Follies - friendly unofficial group	


Clements

CARPENTRY & PROPERTY SERVICES
clementscarpentry@hotmail.co.uk

- MAINTENANCE
- REFURBISHMENT
- MODERNISATION
- PROJECT MANAGEMENT

FULLY INSURED

 **07584 201706**

 **01296 625863**

The **50** plus

Home Repairs

- Plumbing • Electrical
- Handy • Decorating
- Gardening
- And more from
 - Tap washers and
 - Showers and heating
 - To consumer units (fuse boxes)
 - Fencing and external works
 - Plus technology and help at home for the elderly



Call or visit our web site for full details of our broad range of services, helpful advice & pricing

01494 784 448

www.the50plus.co.uk

Serving customers for over 20 years

COMPUTER TROUBLE?



**WENDOVER
COMPUTERS**

Back Street, Wendover 01296 200275

*Do you feel like throwing your computer out of the window?
 fed up with it going slow?
 Crashing or freezing?
 Strange messages popping up?
 or would you just like to upgrade?*



Come and check out the Wendover Computers refurbished station. We stock iPads, iPhones, iMacs, Macbooks, PCs and Laptops

Speed up your slow Computer with an SSD
 Significantly improve the performance of computer by upgrading the old HDD



iPhone & iPad repairs
 anything from smashed screens to battery replacements



Brand new Dell Laptop
 Windows 11
 SSD



Only £499

help@wendover-computers.co.uk
 www.wendover-computers.co.uk



ANTIQUES AT... WENDOVER

Antiques Centre - Established 1987



c1665, very fine
oak carved bible
box. Piced at £180



Why not enter our monthly Mystery Object Competition,
the winner receives a £10 Gift voucher

Open 7 Days a Week

10am- 5.30pm Monday to Saturday

11am - 5.00pm Sundays and Bank Holidays

Car Park, Tea Room, Barn shops and Gallery

Antiques At...Wendover, The Old Post Office, 25 High Street, Wendover, Bucks. HP22 6DU
www.antiquesatwendover.co.uk ☎ 01296 625335



**Audited, Vetted
& Approved** by the
Buckinghamshire County Council
Trading Standards

"Excellent value for money"
"Fantastic work" "Totally reliable &
trustworthy" "Meticulous attention
to detail" "First rate personal
service" "Always professional"
"Conscientious, diligent &
courteous"

INDUSTRIAL | COMMERCIAL | DOMESTIC

M. SIMMONDS Decorating Contractors

A Complete Painting & Decorating Service

Family Business Established Since 1979 we pride
ourselves as one of the best in the business

- Expertise in painting, decorating and wallpapering
- Specialist in all Interior and Exterior work
- Full carpentry and repair service
- We can take care of all your modernisation and
refurbishment plans, undertaking and overseeing all
plastering and small electrical work

CALL NOW for a FREE ESTIMATE, and put us to the test



Craftsmen Decorators
Carpentry & Repairs
Refurbishment

T 01296 655774 M 07850 499795

E michael@msimmonds.co.uk www.msimmonds.co.uk

f thehairystick @thehairystick msimmonds_decorating in M Simmonds Decorating Ltd

Approved, fully trained & qualified. Office: Hobbs Barn, Klee Close, Quainton HP22 4AF